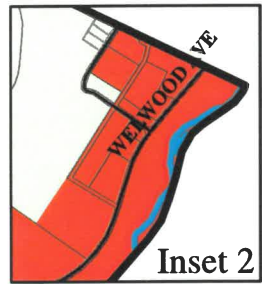
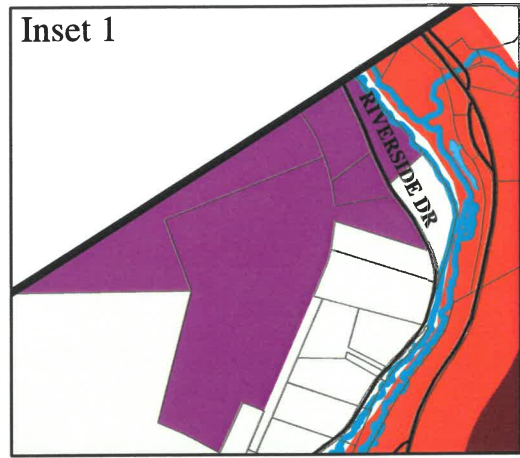
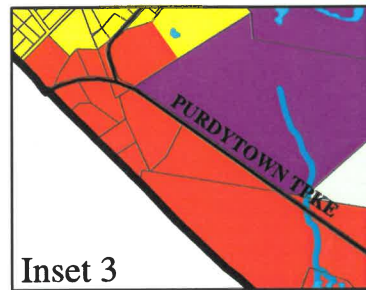


Palmyra Township, Wayne County, Pennsylvania Zoning Map



500 250 0 500 1,000
Feet



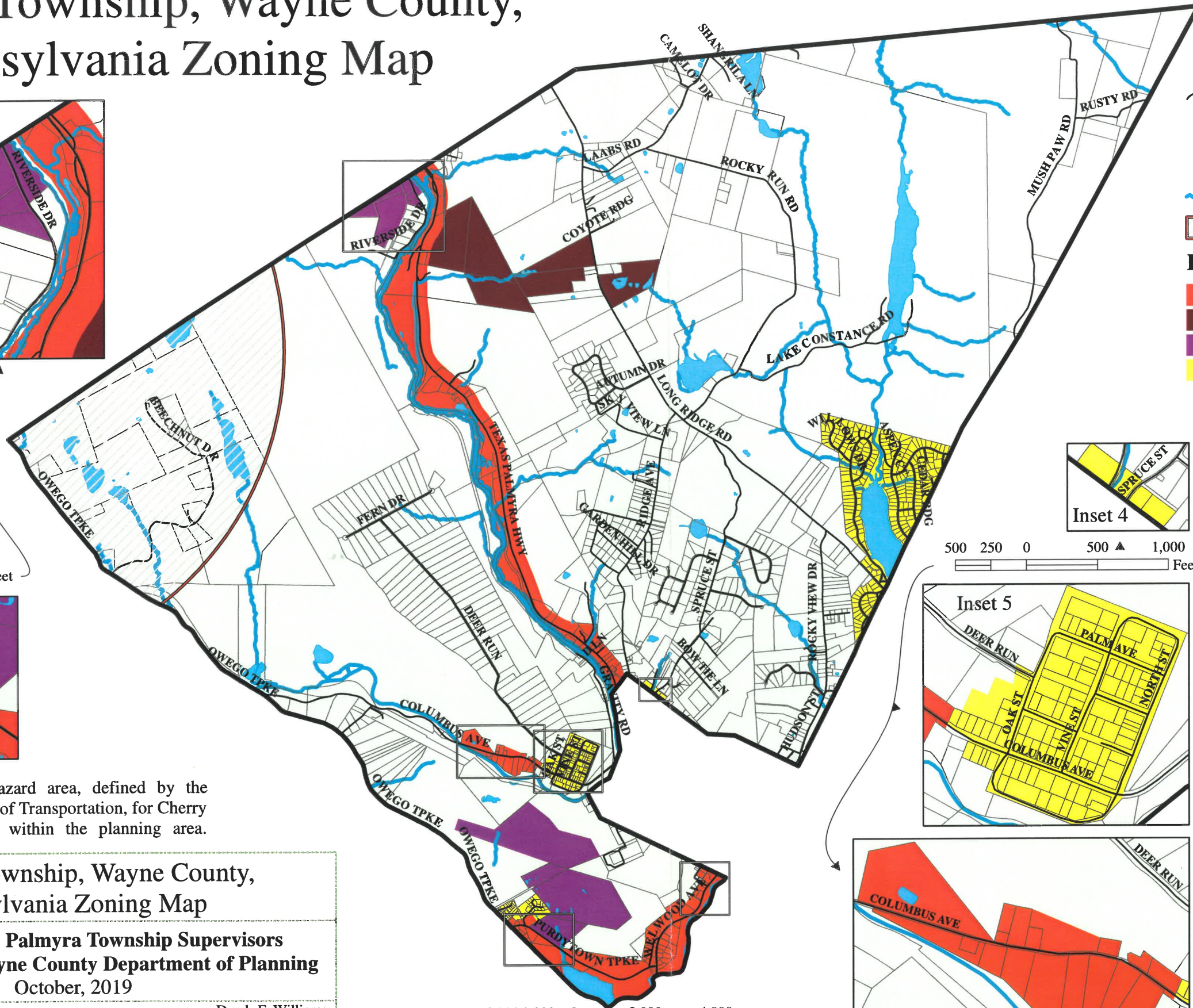
* Part of the airport hazard area, defined by the Pennsylvania Department of Transportation, for Cherry Ridge Airport that falls within the planning area.

Palmyra Township, Wayne County, Pennsylvania Zoning Map

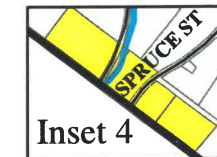
Prepared for the Palmyra Township Supervisors
Prepared by the Wayne County Department of Planning
October, 2019

waynecountypa.gov
925 Court St. Honesdale, PA 18431

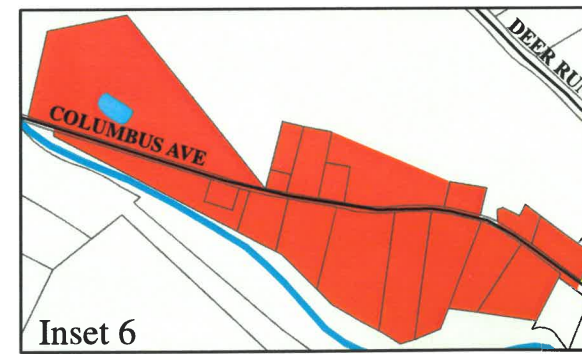
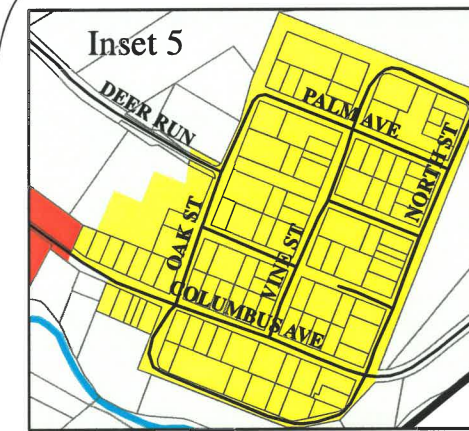
Derek F. Williams
(570) 253-5970 ext. 4060



- Township Boundary
 - Roads
 - Tax Parcels
 - Water Bodies
 - Water Courses
 - Cherry Ridge Airport Surface Area*
- Lake Region Zoning Districts**
- C-1 General Commercial
 - C-2 Resort Commercial
 - I-1 Industrial
 - R-1 Low Density Residential
 - R-R Rural Residential



500 250 0 500 1,000
Feet



2,000 1,000 0 2,000 4,000
Feet

Palmyra Township Official Zoning Map 2019

Adopted in accord with the Pennsylvania Municipalities Planning Code this 3rd day of DEC, 2019, at a duly convened meeting of the Palmyra Township Supervisors, Wayne County, Pennsylvania.

Chairman

Vice Chairman

Supervisor

Attest:
Secretary