

COUNTY TOPICS

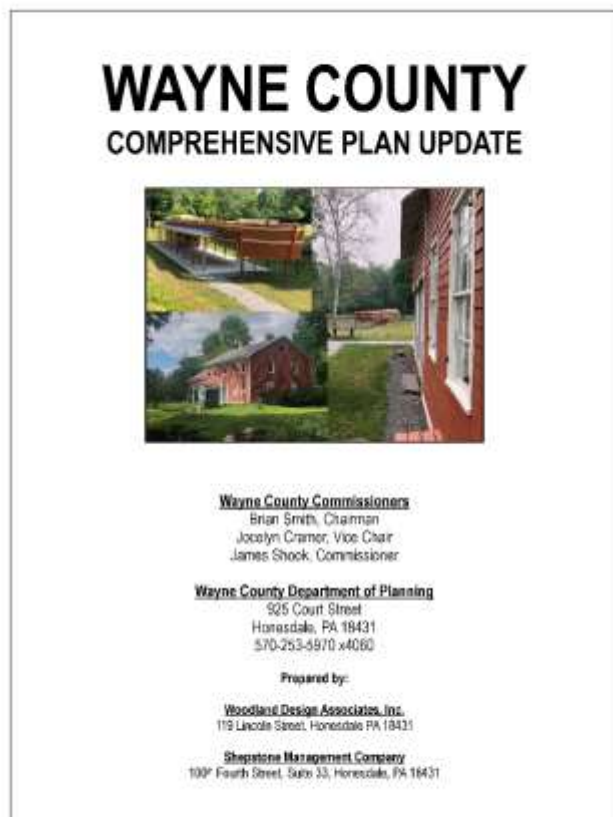
Wayne County Comprehensive Plan Update

Act 247, The Pennsylvania Municipalities Planning Code requires, “...*County comprehensive plans shall be updated at least every ten years.*” As required by State law, Wayne County adopted an update to its Comprehensive Plan in 2024, a process that spanned several years and began in 2021.

The consulting firms of Woodland Design Associates, Inc. and Shepstone Management Company were contracted by the County to draft the update to the existing Plan. Some of the first steps were to form committees, engage the public and draft goals for the update. Surveys were made available to the public to solicit opinion on various topics of interest, and public meetings were held in several locations. Various stakeholder groups were also provided opportunity to offer input on matters of importance to the County.

The overarching objective of the plan is to both assess and inventory existing resources and conditions in the County, and for the resulting plan to serve as a guide for future growth and development.

Nine different analyses including Cultural Resources, Community Facilities, Transportation, Recreation, Natural Resources, Existing Land Use, Population, Housing and Economics were individually prepared. These thorough studies, together with the input from the residents of Wayne County and various stakeholder groups, provided the foundation to develop seven plans on topics including Land Use, Community Facilities, Transportation, Housing, Economic Development, Historic Resources, and Water Supply & Utilities. Additional plan sections designating ‘Goals’ and the ‘Implementation’ of those goals were also developed.



The Wayne County Comprehensive Plan Update was completed in late 2023 and subsequently adopted by the Wayne County Commissioners on February 22, 2024. It is available for viewing on the County’s website at <https://waynecountypa.gov>.

A special note of appreciation and recognition of Mikki Uzupes, who, through the use of various media outlets and endeavors, worked steadfastly as an advocate of the public’s interest and involvement in the plan. She was lost to us all much too soon and will be dearly missed.

Wayne County GIS

The Wayne County Planning/GIS Department works on many GIS (Geographic Information Systems) projects each year including setting physical 911 addresses, amending building footprints, maintaining road centerlines, revising tax parcel boundaries, and updating the data that supports the County 911 dispatch system.

In addition, the Department regularly supports other County offices with their GIS needs. The public is also served through data requests, custom cartography, aerial mapping products, and interactive publicly accessible online mapping applications.

Wayne County Interactive Parcel Viewing Map

The Planning/GIS Department's interactive web map provides the public access to tax parcels with ownership information, public/private roads, and verified 911 addresses in Wayne County in addition to other information such as hydrography features, elevation information and various other types of data. Staff made some changes to labeling and symbology this year to improve the readability of the map. Using Arcade expressions, labels were converted to proper case from all capital letters. Symbology was streamlined and application's theme colors now correspond with those on the County's website making for a more seamless user experience. The Interactive Parcel Viewing Map received 249,793 views in 2024 with an average of over 684 views per day. This was a significant increase from 2023 which had 201,227 views averaging 500 views per day.

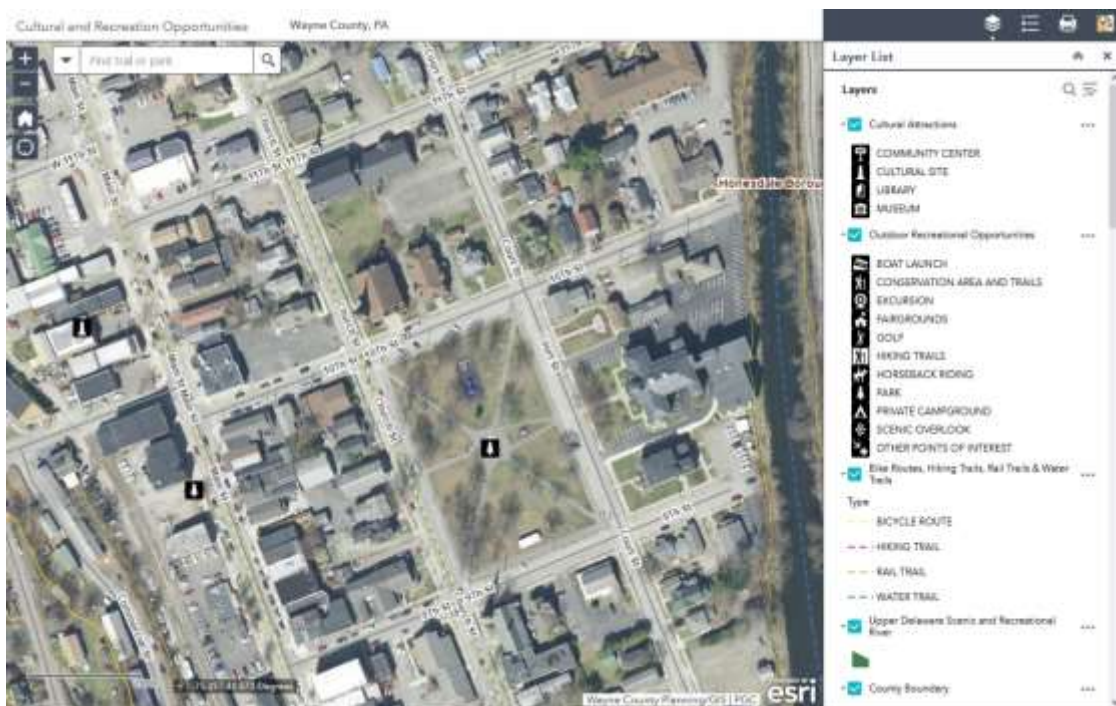


Screenshot of the Parcel and Address viewer Web Mapping Application.

Staff began working on a replacement for the current Parcel Viewing map as ESRI will retire the platform upon which the current application is built in early 2026.

Wayne County Cultural and Recreation Opportunities Map

Using the information gathered in the Wayne County Recreation, Parks, and Natural Resources Plan, the GIS Department created a public web mapping application to help connect residents and visitors to different cultural and outdoor recreation opportunities in the County such as the location of libraries, cultural sites, museums, hiking trails, parks, and boat launches located throughout the County in 2023.



Screenshot of the Cultural and Recreational Opportunities Web Mapping Application.

Like the Parcel and Address viewer Web Mapping Application, labels were converted to proper case from all capital letters and theme colors were updated to coordinate with the County's website. Staff has also begun working on a replacement for this app.

Wayne County Tax Assessment and GIS

The Wayne County Department of Planning/GIS works closely with the County Tax Assessment Office to help maintain tax parcel data, rights-of-way, building footprints, and the County's Act 319 Clean and Green Program (preferential tax abatement). GIS staff update parcel geometry after a land subdivision, merger or recorded survey. Data produced and maintained by the Planning/GIS department is used by assessors in their daily work.

Planning/GIS staff in conjunction with a contractor began working on a new system to modernize how tax maps are maintained. The current system uses physical Mylar sheets upon which tax parcels are drawn. Changes made to parcel lines need to be updated not only in GIS, but also on these Mylar sheets. The new system will use GIS data to produce tax maps on a scheduled basis thus reducing the amount of staff time necessary to maintain accurate parcel data and will ensure that tax maps and GIS data are up-to-date.

Wayne County 911 and GIS

The Planning/GIS Department creates and updates address points, road centerlines, and driveways as well as Fire, EMS, and Police coverage areas in the 911's Computer Aided Dispatch (CAD) system.

Telephone records are also maintained daily for the County. New numbers are connected to address points, changes to telephone record information are recorded, and numbers no longer in use are disconnected from addresses. In 2024, 34,342 telephone records were reviewed and 5,555 were updated by the Planning/GIS Department. This is a significant increase from 2023 where only 3,675 records were reviewed with 1,863 records being updated. This large increase is due to telephone service providers getting their data ready for integration into the NG911 system. These changes by the telephone providers was necessary to standardize their records so they could be integrated with the statewide system.



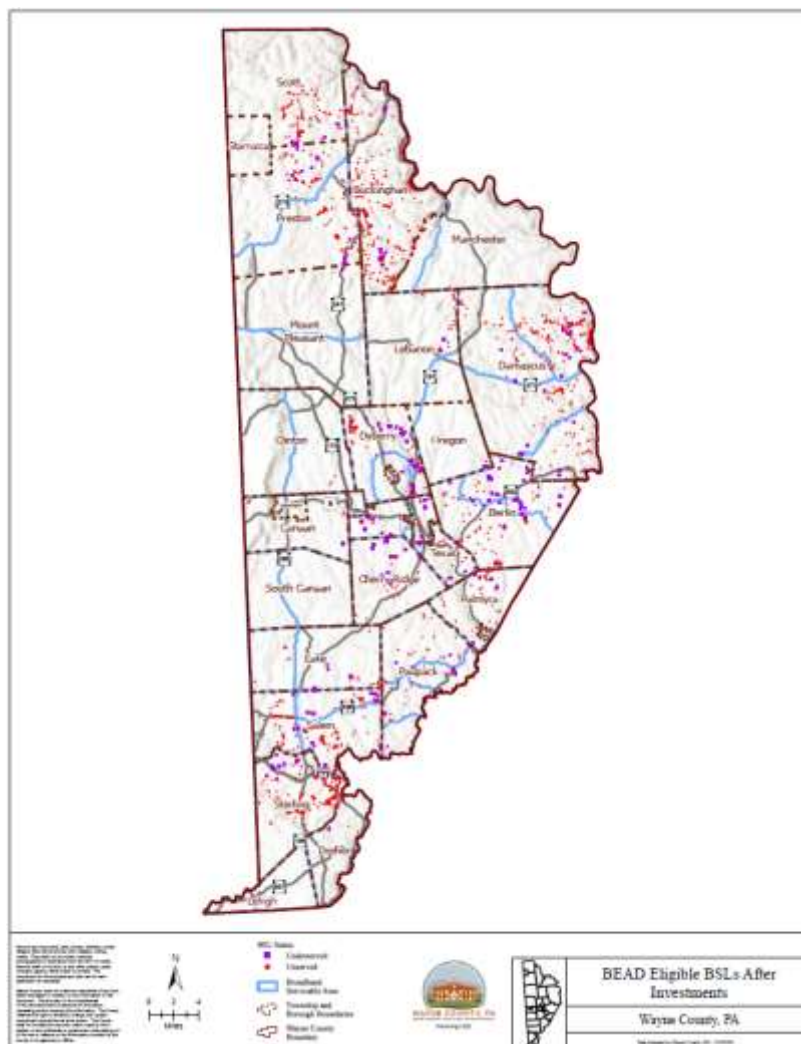
In addition to the current method of maintaining telephone records, the Planning/GIS Department began maintaining the telephone records in the new GIS based system. This “dual provisioning” state is in preparation for the migration to the statewide Next Generation 911 (NG911) system. Integration into the new system has been delayed until early 2025. Once the County has fully migrated to NG911, the older way of maintaining telephone records will no longer be necessary and thus be discontinued.

Property Mailing Lists

The Planning/GIS Department provides regular assistance to municipalities and organizations looking to identify various tax parcels and ownership information. For instance, GIS can generate a list of adjacent property owners where a conditional use is being proposed, a list of mailing addresses for property owners served by a particular fire company, or a list of properties within a specific watershed for a watershed management organization.

In-County Mapping Assistance

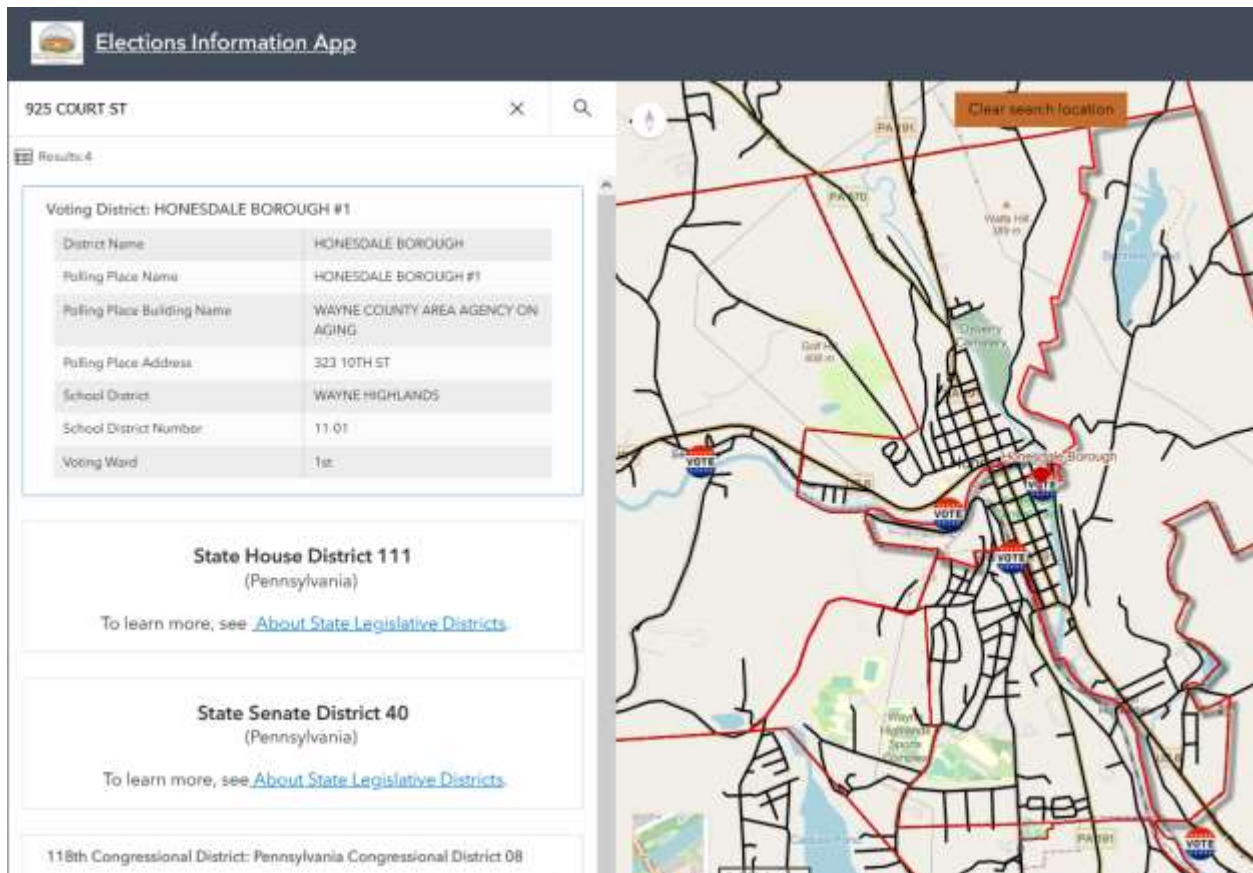
GIS supports many offices and organizations within the County. In 2024, the Planning/GIS office continued to offer mapping and data analytics support to WEDCO to improve access to broadband for unserved and underserved residents. Planning/GIS staff helped in the review of data submitted by carriers for grants to be awarded by WEDCO and Wayne County.



Map showing underserved and unserved locations in Wayne County, PA.

Planning/GIS staff aided municipal staff with implementing short term rental (STR) ordinances making maps showing parcels within 200' of a parcel applying for an STR permit. Staff also made maps to support various grant applications by municipalities to a variety of different state and federal programs.

In conjunction with the Wayne County Bureau of Elections, Planning/GIS staff introduced a new public application that allows users to look up their voting district, polling place, school district, and state and federal congressional districts based on a valid Wayne County 911 address. Along with the other numerous sources of information available on the County's website, this simple application will help inform voters of vital information regarding voting and their elected officials.



Elections Information app showing elections information for 925 Court St.

Community Organizational Assistance

The Planning/GIS Department is often asked to help community organizations by providing mapping products and data for various causes. Planning/GIS staff was again asked for a map of the stops on their 2024 Garden Tour that was to be included in their brochure. The WMH Auxiliary provided the stop locations, and the GIS staff produced a map that will help guide patrons on the tour.

Planning/GIS staff produced maps for the Upper Delaware Council showing the Upper Delaware Scenic and Recreational River Corridor in Berlin and Damascus Townships. These maps help guide municipal staff when making decisions regarding development within the Corridor.



Other GIS Initiatives

With the help of a contractor, GIS staff oversaw the migration of the County's GIS to a cloud-based ArcGIS Enterprise platform. All of the current workflows were adapted to this new system. Some of these workflows required significant restructuring to accommodate for the system. This modernization of the County's GIS greatly improved the stability and usability, and security of the GIS and modernizes the County's GIS using industry best practices. Utilizing a contractor to deploy and maintain the GIS Enterprise as well as host the data allows the staff to focus on providing GIS services to other County Departments and the public.

Also with the help of a contractor, tax parcel data was migrated to ESRI's Parcel Fabric. The Parcel Fabric is a parcel management system within the County's current GIS that provides a suite of tools to manage tax parcel and other related data. The Parcel Fabric provides tools to ensure high quality topology of individual parcels and utilizes a record driven workflow for the creation and editing of new parcel lines. The Fabric will track parcel lineage and be able to show how a parcel has changed over time.