

Chapter III - Community Facilities Analysis

Local Government Facilities and Programs

Wayne County's 28 municipalities operate under the Pennsylvania Borough and Second-Class Township Codes, providing a wide range of services to their residents. The focus of municipal government has traditionally been on road maintenance, although police protection has been a major part of the Hawley, Honesdale, and Waymart Borough budgets.

Notwithstanding this, municipalities have, over the years, taken on many additional responsibilities, including services such as code enforcement, recreation, and emergency management. Local municipalities are also now mandated by state law to regulate sewage disposal, flood plain management and storm water management.

The expanded roles of municipalities have led during the last three decades, to building of more modern meeting facilities, purchase of additional equipment and adding of staff (including contracts with various professionals) to carry out these new and expanded responsibilities.

Some municipalities also provide park and recreation opportunities for their residents. There are 14 municipalities with municipal parks. Recreational facilities in some municipalities are also associated with various school facilities throughout the County. Many of the Supervisors within these municipalities have voiced the need for added infrastructure, such as these recreation facilities, to make the County and region more attractive to people looking to relocate to more rural areas.

Not only are infrastructure needs desirable to residents, but also to employers looking to start or relocate a business, so their employees have a high "quality of life" which is a topic that will be brought to attention numerous times throughout this plan.

Municipal governments are heavily dependent on Liquid Fuels Tax allocations from the Commonwealth of Pennsylvania. These funds, together with other assistance for items such as flood damage correction, are matched with general fund dollars by municipalities for the purpose of maintaining and upgrading local road and street systems.

County Government Facilities and Programs

Wayne County, like all counties, is responsible for delivering human services, many mandated by the Commonwealth. It also provides for tax assessment, voter registration, election administration, maintenance of land records, keeping of legal documents, land use planning and administration of much of the criminal justice system.

The Tax Assessment Office assesses property values and maintains tax records for municipalities, school districts and the County itself. Voter registration and elections supervision are the primary responsibility of the County Bureau of Elections. The maintenance of land ownership and division records and other legal documents are the function of the County Register of Wills and Recorder of Deeds Office and the County Office of Prothonotary and Clerk of the Courts.

Wayne County Comprehensive Plan Update

The County Treasurer maintains financial records while also issuing certain permits and licenses. There are, in addition, elected Auditors, two Judges, District Attorney, County Coroner and Sheriff. Wayne County has an operating budget of more than \$38 million in 2023.

A major responsibility of county government in Pennsylvania is the delivery of state mandated and supported human services. Aging, children and youth, and behavioral health/intellectual disability services are among these. Drug and alcohol services are also delivered in Pennsylvania through county government. County government in the Commonwealth has the additional responsibility of judicial system administration at the local level. Finally, county government also plays a significant role in workforce development programs.

The County of Wayne created a Department of Human Services in 2004. This brought together several individual agencies of the County government. This Department's purposes are set out in its mission statement. "The primary mission of the human service agency is to serve the needs of Wayne County residents, promote independence and contribute to the quality of life of the community."

"The county sponsored agency is a rural resource which coordinates efforts and encourages cooperation among all Wayne County human service agencies. The Office of Human Services acts as a liaison with the Wayne County Board of Commissioners and human service agencies, oversees the administration of all County human service agencies, acts as a coordination unit for all County contract human service agencies, and facilitates the access of citizens to service coordination." The County Human Services Department oversees the operations of the following agencies or services:

Table III-1: Wayne County Human Service Agencies

Wayne County Human Services Department		
Area Agency on Aging	Food Pantry	Veteran Services
Behavioral and Developmental Programs	Early Intervention	Volunteer Program
Children and Youth	Transportation	Dietary
Drug and Alcohol Services	Housing Department	System of Care/ Integrated Services

Wayne County also operates a recycling center and a robust voluntary recycling program at the center in Berlin Township.

County and State Criminal Justice System, Facilities and Services

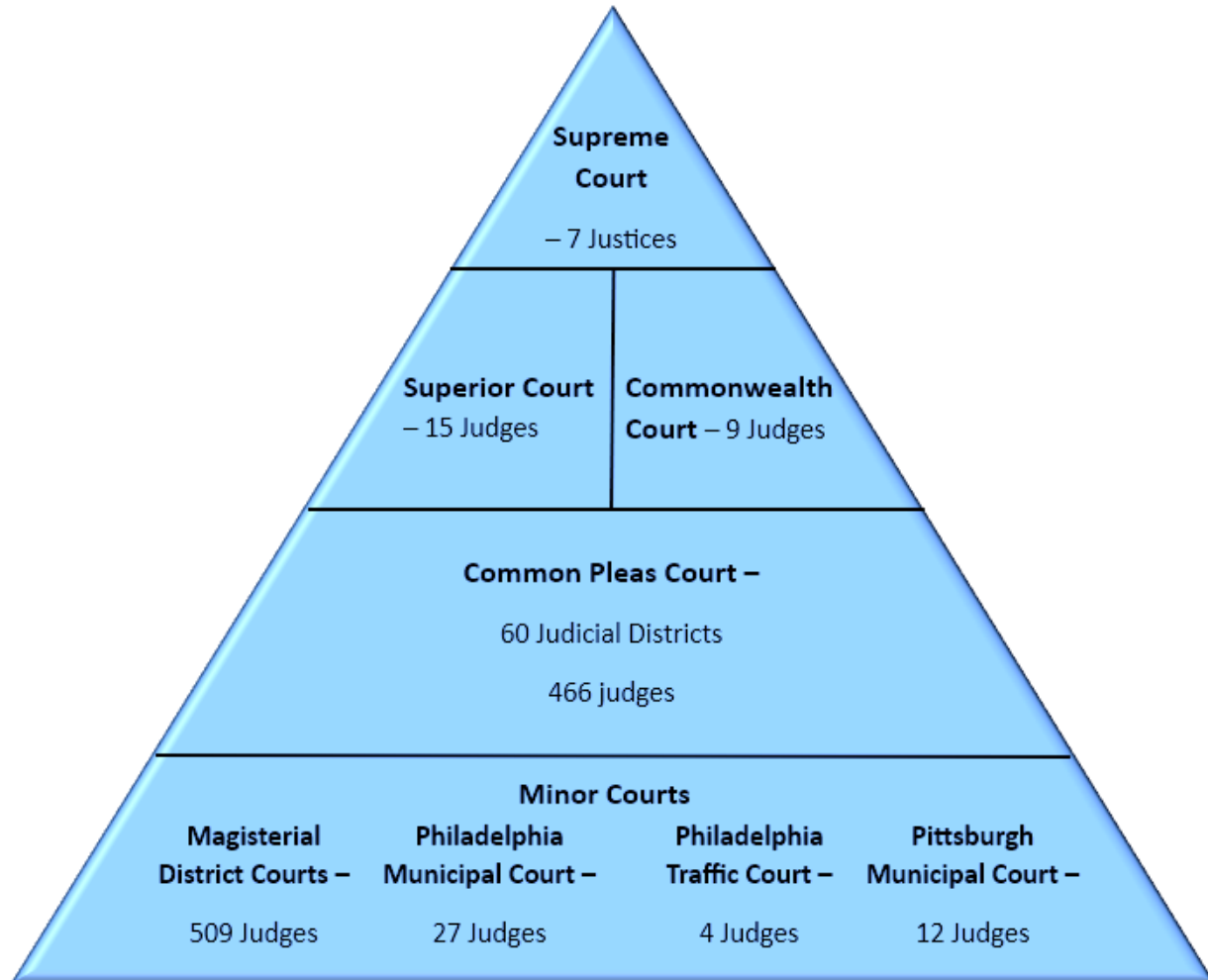
Wayne County, like many other counties in Pennsylvania, depends largely on the Pennsylvania State Police for police protection services. The State Police Barracks serving Wayne County is located on Pennsylvania Traffic Route 191 about 5 miles south of Honesdale in Cherry Ridge Township.

Four local municipalities in Wayne County maintain a municipal police force. These are Hawley Borough,

Wayne County Comprehensive Plan Update

Honesdale Borough, Lehigh Township and Waymart Borough. Hawley Borough, through a contractual relationship with Palmyra Township, Wayne County also provides police coverage to that municipality. Forest City Police Department also provides coverage within Wayne County.

The Pennsylvania Supreme Court describes the Commonwealth of Pennsylvania's state courts system as basically being structured like a pyramid. At the base of the pyramid are the magisterial district judges, where cases involve small claims, minor crimes and traffic offenses are heard. These are the minor courts that constitute the entry level into the court system.



As of November 2023

One step up on the pyramid are the Common Pleas courts in 60 judicial districts around the state where trials are held in civil and criminal cases and disputes involving family and estate matters are litigated.

"Another step up are the intermediate appellate courts, the Superior Court, a general court of appeals with 15 judges, and the Commonwealth Court, a special court with nine judges which hears government-related matters. At the top of the pyramid is the highest court, the Supreme Court with seven justices. The Supreme Court has the power to review any case from the lower courts. It also has administrative authority over the entire Pennsylvania court system."

Wayne County Comprehensive Plan Update

Wayne County constitutes the 22nd Judicial District of Pennsylvania and is composed of three Magisterial District Courts and the Court of Common Pleas. The Court of Common Pleas is composed of two elected judges. The longest serving judge is designated the President Judge.

The Court of Common Pleas supervises the Magisterial District Courts, Court Administration, Adult Probation and Parole, Juvenile Probation, and Domestic Relations.

The Wayne County Prothonotary/Clerk of Courts Office is the depository for all civil and criminal cases records filed within Wayne County. Case records filed within this office cover all areas of civil and criminal cases including divorce, adoption, custody, visitation, judgment, liens, domestic relations and criminal matters.

The Wayne County Drug & Treatment Court was established in 2017. The program represents a comprehensive effort focusing on non-violent offenders to combat substance abuse and its associated criminal activity. In recognizing the disease of addiction, the Drug and Treatment Court Program provides a highly structured treatment program to participants while ensuring public safety through intensive supervision.

The Wayne County Sheriff's Office and constables provide support services to District Courts, including security, prisoner transport and the serving of court documents when required. The Wayne County District Attorney is elected by the voters of the County and is the chief prosecutor of criminal cases in the County.

The 22nd Judicial District, as noted above, includes three Magisterial District Courts. Magisterial District Courts are the first level of the judicial system in Pennsylvania. Magisterial District Judges conduct preliminary arrangements, preliminary hearings, and bail hearings. They also handle all traffic violations and hear certain civil complaints, such as municipal ordinance violations, landlord/tenant disputes, and other civil actions involving claims not exceeding \$12,000.

Funding for the Magisterial District Courts in Pennsylvania is provided by both the Commonwealth and county. The Commonwealth pays for the salary and benefits of each of the Magisterial District Judge and the County pays the salary and benefits of the support staff, any rent, utilities, office equipment and supplies.

Tables III-2 & III-3 list the number of cases handled by each Magisterial District Court for the calendar years 2021-2022 and how they were classified.

Table III-2: Wayne County Magisterial District Caseloads

District Court	Population 2010	Population 2020	Caseload Average	6th Class County Caseload Average	Judicial District's Average Caseload
22-3-01 (Southern Wayne)	20,661	19,829	2,846	3,230 (12% below)	2,043 (39% above)
22-3-02 (Central Wayne)	16,266	15,595	1,963	3,230 (39% below)	2,043 (4% below)
22-3-04 (Northern Wayne)	15,895	15,731	1,080	3,230 (87% below)	2,043 (47% below)
Countywide	52,822	51,155			

Wayne County Comprehensive Plan Update

Table III-3: Wayne County Magisterial District Caseload Distribution

District Court	Year	Average Civil Filings	Average Landlord/ Tenant Filings	Average Criminal Filings	Average Non-Traffic Filings	Average Private Criminal Filings	Average Private Summary Filings	Average Traffic Filings	Total Average
22-3-01 (S. Wayne)	2021-22	325	47	230	426	4	22	1,791	2,846
22-3-02 (C. Wayne)	2021-22	246	84	212	289	11	81	1,040	1,963
22-3-04 (N. Wayne)	2021-22	112	22	112	222	4	21	587	1,080
Countywide	2021-22	683	153	554	938	19	124	3,421	5,893

Source: Wayne County Court – Magisterial District Reestablishment Draft Proposal (Jan. 19, 2022)

State Government Facilities and Programs

There are several State government agencies with offices located in Wayne County that provide specific programs and services to Wayne County residents.

The Pennsylvania Department of Conservation and Natural Resources works through the Wayne Conservation District to provide forestry assistance. The District, established in 1955, is an entity of the state government, one of 66 such districts in Pennsylvania. Originally, the District was primarily involved in agriculture and watershed protection because of the devastating floods experienced by Wayne County. Today, the Conservation District provides many programs focused on conservation education, forestry, agriculture, and water quality. The Bureau of Forestry (part of DCNR) employs one full time forester who provides forest management consultation to landowners throughout the County.

SCI Waymart is a prison facility used to house and rehabilitate inmates convicted of various crimes through programs and services aimed at reducing recidivism and maintaining security within the prison. This includes providing education, vocational training, and various support services to help inmates reintegrate into society. County Assistance Office Health Department,

The County Assistance Office, a branch of the Pennsylvania Department of Human Services, offers services to people and families in need once approved through the application process. Available benefits and services include Supplemental Nutrition Assistance Program (SNAP), Cash Assistance, Health Care Coverage (Medical Assistance), Home Heating Assistance (LIHEAP), Family Planning Services, Childcare assistance, School meals, and Long-Term Living Services.

The Wayne County State Health Center (Erie Street, Honesdale) is operated by the Department of Health and offers support services and deals with communicable and chronic diseases. It operates an immunization clinic to serve those without insurance or whose insurance does not cover vaccines.

Additionally, PennDOT has multiple maintenance facilities located strategically across the County to act as hubs for highway maintenance activities and storm work.

Federal Government Facilities and Programs

The United States Postal Service has the greatest presence and employs the largest number of employees

Wayne County Comprehensive Plan Update

of all federal agencies located in the County. The Postal Service currently operates 25 Post Offices throughout Wayne County including the following locations.

Table III-4: Postal Service Facilities

Post Office	Address	Zip Code
Post Offices Located in Wayne County		
Beach Lake	1015 Beach Lake Hwy	18405
USP Canaan	3057 Eric J. Williams Mem Dr.	18472
Damascus	1676 Cochection Turnpike	18415
Equinunk	4338 Hancock Hwy	18427
Gouldsboro	546 Main Street	18424
Hamlin	501 Hamling Hwy	18427
Hawley	100 Main Avenue	18428
Honesdale	830 Main St	18431
Lake Ariel	1446 Lake Ariel Hwy	18436
Lake Como	3177 Creamton Dr	18437
Lakewood	1436 Crosstown Hwy	18439
Milanville	1143 River Rd	18443
Newfoundland	8 Panther Rd	18445
Pleasant Mount	No Current Facility	18453
Poyntelle	718 Crosstown Hwy	18454
Preston Park	530 Shehawken Rd	18455
Prompton	88 River Rd	18456
South Canaan	2159 Easton Turnpike	18459
Sterling	615 Sterling Road	18463
Starlight	231 Starlight Lake Rd	18461
Starrucca	327 Starrucca Creek Rd	18462
Tyler Hill	1080 Cochection Turnpike	18469
Waymart	310 Honesdale Rd	18472
White Mills	744 Texas Palmyra Hwy	18473
Post Offices Serving Wayne County		
Cresco	6535 Route 191	18326
Forest City	334 Main St.	18421
Moscow	331 N. Main St.	18444
Susquehanna	1186 W. Main St.	18847
Thompson	412 E. Jackson St.	18465
Tobyhanna	659 Main St.	18466
Uniondale	924 S. Main St.	18470

Source: U.S.Postal service and Melissa Dats

The United States Penitentiary, Canaan is a high-security United States federal prison for male inmates in northeastern Pennsylvania, with a satellite prison camp for minimum-security male inmates. It is operated by the Federal Bureau of Prisons, a division of the United States Department of Justice. USP Canaan opened in March 2005 and is designed to house 1088 male inmates in six housing units.

The United States Army Corps of Engineers operates and maintains two flood control projects in Wayne

Wayne County Comprehensive Plan Update

County. Prompton Dam encompasses approximately 500 acres, and the Jadwin Dam includes roughly 400 acres. Prompton Dam, located on the headwaters of the Lackawaxen River, maintains a permanent reservoir with additional capacity reserved for flood control, and is open to the public for hunting, fishing, hiking, biking, picnicking, and disc golf. Prompton State Park was established in 1962 on lands owned by the Corps of Engineers. Although the Prompton facility is officially listed by the Department of Conservation and Natural Resources as a State Park, it is undeveloped, and now managed by the Lackawanna State Forest but is open to visitors. The other major flood control structure, the Jadwin Dam, spans Dyberry Creek just north of Honesdale, and remains dry until needed for flood control.

There is a scenic overlook on Route 191 and an information pavilion overlooking the dam, which is frequently in use by passerby visitors. The County has some maintenance responsibilities with respect to these facilities. The National Park Service Upper Delaware Scenic & Recreational River headquarters are also found on River Road, between Milanville and Darbytown.

Non-Profit Social Service System in Wayne County

There are, in addition to the mandated services delivered directly by Wayne County and described earlier, several services provided through a private network of non-profit agencies in the County. These agencies and their functions in the broader social service system are described in the following subsections.

Human Services Provided to Children, Youth, Families and Adults:

A complete list can be obtained by contacting the Wayne County Human Services Administrator.

Employment Services:

Wayne Pike Workforce Alliance - The Wayne Pike Workforce Alliance serves as an intermediary to identify, create, and provide educational opportunities that build the workforce and support lifelong learning. It is a partner agency in Pennsylvania's CareerLink System. Many of the services offered through the CareerLink System have no eligibility guidelines other than to be eligible to work in the United States.

Programs within Workforce alliance include: 1) SHINE (Schools & Homes in Education After School Program) serves academically at-risk students and families in the Wallenpaupack Area, Wayne Highlands, and Western Wayne school districts, 2) Essential Skills-Digital Literacy, 3) Internship Program, 4) Wayne County Pa CareerLink Services and numerous other courses, trainings, and support programs.

The program is funded primarily through the Pa Department of Education and the Pa Department of Labor & Industry through the Pocono Counties Workforce Development Board.

Human Resource Center – The Human Resource Center has program locations in the Borough of Honesdale, Berlin Township, Hawley, and Effort, Pa. The employment services provided by the Human Resource Center are targeted towards persons with disabilities throughout Northeast PA.

Specifically, the Human Resource Center provides a vocational training center in Berlin Township that offers a workshop setting where individuals with disabilities perform various work functions under staff

Wayne County Comprehensive Plan Update

supervision. The Center also provides community-based or competitive employment opportunities for persons with disabilities in a variety of employment opportunities.

Wayne County Employment Coalition

The Wayne County Employment Coalition (WCEC) is a community coalition, comprised of local school districts and educators, employment support provider agencies, the State Office of Vocational Rehabilitation, the State Office of Development Programs, community businesses, the Wayne County Office of Behavioral and Development Programs and Early Intervention, Supports Coordination Organizations, the Pocono Counties Workforce Development Board and the Wayne / Pike Workforce Alliance, Wayne County Children and Youth Services, community based organizations and other interested parties.

WCEC members work together to create and promote successful employment opportunities, choice of employment opportunities and supports needed for individuals with barriers to employment and disabilities in pursuit of everyday life. The Coalition was formed in 2008 and has grown in number and purpose. The WCEC meets bi-monthly and serves as a central point of contact, facilitates information sharing, educates the community and affected parties about changing laws, regulations and best practices as it relates to employment for those with barriers to employment and disabilities.

Members of the WCEC partner to host Transition Fairs for youth that focus on employment as well as independent and healthy living. In addition, the organization has worked collaboratively to share information about how supports and services can serve individuals, students and youth with regard to assistance, services or support that can be provided by all programs in a concerted coordinated effort. It is hoped that, in this way, the WCEC can help enable individuals to gain skills, experience and competitive employment.

Other Community Based Services:

There are numerous other private and church affiliated organizations providing social services to residents. These encompass a host of other non-sectarian programs operated by volunteers as well. A complete list of such organizations and facilities may be found at pa211ne.org. The following provide countywide services:

Salvation Army – The Salvation Army provides a wide variety of preventative, support, and rehabilitative services to meet the physical, emotional, and spiritual needs of families and individuals. The range of programs offered encompasses after-school programs, social clubs, and parenting classes through drug and alcohol rehabilitation and disaster response.

The Salvation Army has a large and successful Thrift Shop in Honesdale and regularly partners with churches, charities, and other organizations to provide social and relief services. It also operates the Ladore Camp Retreat and Conference Center in Waymart. This very large facility includes a historic camp and modern conference center on 1,400 acres, with lodging facilities to accommodate up to 400 guests or groups of up to 600 individuals, depending on events.

Wayne County Family Center – The Wayne County Family Center was launched in 1994 with one of the purposes being to serve the community as a Resource and Referral organization regarding family services, support, and programs in our area.

Wayne County Comprehensive Plan Update

Habitat for Humanity – Habitat for Humanity of Wayne County, Pa Inc. has a mission to provide housing for people in need by way of volunteering, donation, and special fundraising events.

Other Organizations – There are also a number of service clubs and similar entities throughout the County and nearby. These include Rotary Clubs in Hawley, Honesdale and Newfoundland as well as adjacent communities. There are also Lions Clubs in Hawley, Lake Ariel, Honesdale and Waymart for instance. Additionally, there are several other affiliated groups (e.g., American Legion in Gouldsboro) and non-affiliated service clubs (e.g., The Cooperage in Honesdale). Camp Freedom in Canaan Township includes roughly 2,300 facilities and meeting facilities for disabled veterans, emergency responders and Gold Star family members.

Educational Facilities - Public and Private Schools

Eight public schools provide education to children and adolescents from Wayne County. The County-wide enrollment in the 2021-2022 school year was 11,355 students. Most of the student population in Wayne County is found in three primary school districts: the Wallenpaupack Area School District, Wayne Highlands School District and the Western Wayne School District. The Wayne Highlands School District and the Western Wayne School District both serve only students from Wayne County, while Wallenpaupack serves both Wayne and Pike Counties.

Other districts crossing Wayne County borders include Forest City, North Pocono, and Susquehanna. A *School Districts Map* illustrating the boundaries of all districts serving the County follows on the next page. Wayne Highlands School District enrollment in 2021-2022 was 2,332 students and Western Wayne School District enrollment was 1,684 (does not include pre-K which has a total of 52 students enrolled). Table III-5 indicates the number of Wayne County students by grade level K-6 and 7-12 for each of the County's public schools for the school year.

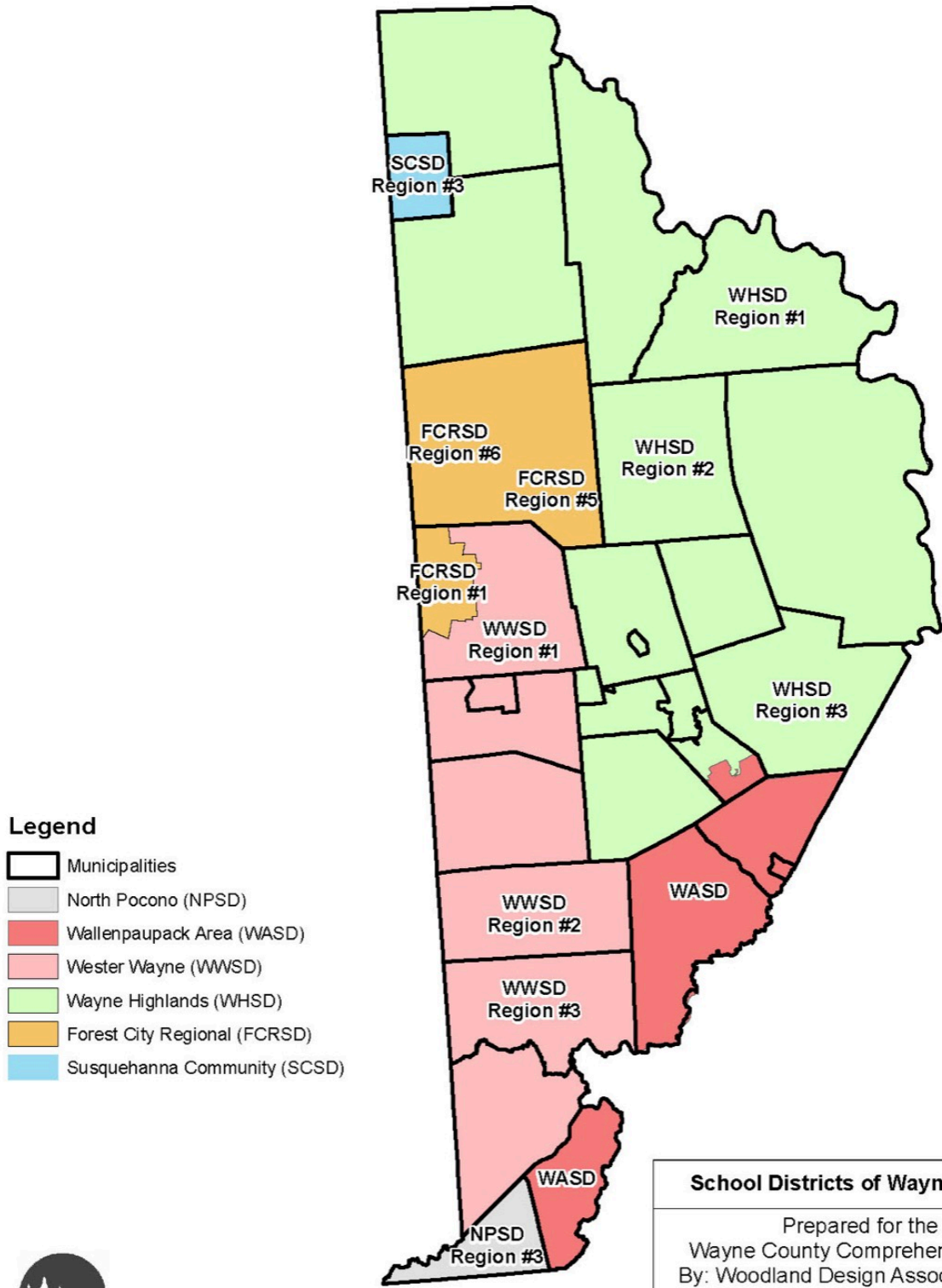
Wayne County is also served by three significant private schools. The Canaan Christian Academy is the largest (180 students enrolled; Pre-K to 12th Grade) with Damascus Christian Academy (Pre-K through 12th Grade) and St. Dominics Academy (Pre-k through 8th Grade) following behind. School enrollment projections provided by the Pennsylvania Department of Education indicate enrollment numbers are projected to decrease for each of the three primary school districts over the period 2023-2024 through 2029-2030, as reflected in Table-6 below. This aligns with the findings of the *Population Analysis and Plan* which you will see later in this report.

Table III-5: Public School Facilities

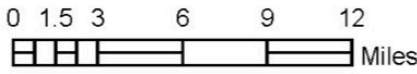
School Districts	K-6	7-12	Total
Forest City Regional School District	393	345	768
North Pocono School District	1,487	1,384	2,871
Susquehanna Community School District	463	339	802
Wallenpaupack Area School District	1,360	1,457	2,817
Wayne Highlands School District	1,230	1,102	2,332
Western Wayne School District	851	833	1,684
Totals	5,784	5,460	11,274

Source: School districts

School Districts of Wayne County



- Legend**
- Municipalities
 - North Pocono (NPSD)
 - Wallenpaupack Area (WASD)
 - Wester Wayne (WWSD)
 - Wayne Highlands (WHSD)
 - Forest City Regional (FCRSD)
 - Susquehanna Community (SCSD)



School Districts of Wayne County
Prepared for the Wayne County Comprehensive Plan By: Woodland Design Associates, Inc.
October, 2023
(570) 253-5970 ext. 4060 www.waynecountypa.gov

Wayne County Comprehensive Plan Update

The Pennsylvania Department of Education school enrollment projections show that there is a declining base of school-aged children throughout the region. Countywide, the department projects public school enrollment will decline from 7,476 in 2023-2024 to 7,197 in 2029-2030, a loss of 3.7%. The following summarizes these projections:

Table III-6: School Enrollment Projections

School Year	Wallenpaupack Area			Wayne Highlands			Western Wayne			County
	K to 6	7 to 12	Totals	K to 6	7 to 12	Totals	K to 6	7 to 12	Totals	Totals
2023-2024	1,353	1,392	2,745	1,213	1,081	2,294	827	805	1,632	7,476
2024-2025	1,371	1,330	2,701	1,207	1,076	2,283	819	791	1,610	7,394
2025-2026	1,363	1,328	2,691	1,210	1,042	2,252	843	754	1,597	7,327
2026-2027	1,353	1,331	2,684	1,205	1,021	2,226	864	727	1,591	7,285
2027-2028	1,381	1,297	2,678	1,195	1,016	2,211	889	703	1,592	7,246
2028-2029	1,387	1,280	2,667	1,178	1,030	2,208	899	701	1,600	7,224
2029-2030	1,410	1,263	2,673	1,164	1,017	2,181	929	684	1,613	7,197

Notes:

- (1) Projections provided by the Pennsylvania Department of Education
- (2) In-migration is not considered in these projections
- (3) Wallenpaupack School District projections include all students (Wayne and Pike County)

Higher educational opportunities near and within Wayne County have increased substantially over the last two decades. Lackawanna College, Northampton Community College, and Luzerne County Community College offer college courses and associate degrees from institutions located within Wayne County. Today, residents can start, complete, and supplement their higher education without traveling long distances.

Lackawanna College (Scranton) has a satellite location in Wayne County and offers 19 different majors. Classes are offered Monday through Friday during the late afternoon and evening hours and on Saturday. Some of these degree programs can be started and completed locally, others can be started in Wayne County and completed at the Scranton campus. This makes Lackawanna College an excellent starting point for all students interested in affordable higher education.

Luzerne County Community College is physically located in Luzerne County but does offer college level courses at Wayne Highlands School District. Johnson College also offers dual enrollment at Honesdale and Western Wayne Schools, where students can earn college credits for courses being taken in High School. It emphasizes workforce development programs in cooperation with business, industry, and economic development organizations throughout Northeastern Pennsylvania. Custom-designed training programs and consulting services are offered to assist business, industry, government, and non-profit organizations. Johnson College, located in Lackawanna County, also offers college level courses at Wayne Highlands School District.

Many other colleges and universities are in remarkable proximity to Wayne County and provide an unusual amount of educational and job training opportunities for a rural area. Table III-7 lists 46 colleges, universities, and technical schools within one hour's driving time (roughly 50-55 miles) of the County. They

Wayne County Comprehensive Plan Update

include a very diverse range of educational opportunities, many with excellent reputations. The relative proximity to higher education opportunities provides residents with an extremely important economic asset.

Table III-7: Colleges and Universities Located within One Hour of Wayne County

Institution	Location
Baptist Bible College	538 Venard Road, Clark Summit, PA 18411
Binghamton University	PO Box 6000, Binghamton, NY 13902
Bloomsburg University	400 E. Second Street, Bloomsburg, PA 17815-1301
Broome Community College	PO Box 1017, Binghamton, NY 13902
Cedar Crest College	100 College Drive, Allentown, PA 18104-6196
Centenary College	400 Jefferson Street, Hackettstown, NJ 07840
College of St. Elizabeth	2 Convent Rd., Morristown, NJ 07960-6989
Davis College	400 Riverside Drive, Johnson City, NY 13790
DeSales University	2755 Station Avenue, Center Valley, PA 18034
East Stroudsburg University	200 Prospect Street, East Stroudsburg, PA 18301-2999
Hartwick College	One Hartwick Drive, Oneonta, N.Y. 13820-4020
Information Computer Systems Institute	2201 Hangar Place, Suite 200, Allentown, PA 18109
Johnson College	3427 N. Main Avenue, Scranton, PA 18508
Keystone College	One College Green, La Plume, PA 18444
Kings College	133 N. River Street, Wilkes-Barre, PA 18711
Kutztown University	PO Box 730, Kutztown, PA 19530
Lackawanna College	501 Vine Street, Scranton, Pennsylvania 18509
Lafayette College	118 Markle Hall, Easton, PA 18042
Lehigh Carbon Community College	4525 Education Park Drive, Schnecksville, PA 18078
Lehigh University	27 Memorial Drive West, Bethlehem, PA 18015
Lehigh Valley College (Allentown Business School)	2809 East Saucon Valley Road, Center Valley, PA 18034
Luzerne County Community College	1333 South Prospect Street, Nanticoke, PA 18634-3899
Marywood University	2300 Adams Avenue, Scranton, PA 18509
Misericordia University	301 Lake Street, Dallas, PA 18612
Moravian College	1200 Main Street, Bethlehem, PA 18018
Muhlenberg College	2400 Chew Street, Allentown, PA 18104-5586
Northampton Community College	3835 Green Pond Road, Bethlehem, PA 18020
Orange County Community College	115 South Street, Middletown, NY 10940
Penn State - Hazleton	76 University Drive, Hazleton, PA 18202
Penn State - Lehigh Valley	8380 Mohr Lane, Fogelsville, PA 18051
Penn State – Scranton	120 Ridgeview Drive Dunmore, PA 18512
Penn State - Schuylkill	200 University Drive, Schuylkill Haven, PA 17972
Penn State – Wilkes Barre	P.O. Box PSU, Old Rt. 115, Lehman, PA 18627
Practical Bible College	400 Riverside Drive, Bible School Park, NY 13737
St. Tikhon's Orthodox Theological Seminary	St. Tikhon's Road, P.O. Box 130, South Canaan, PA 18459-0130
Schuylkill Institute of Business & Technology	171 Red Horse Road, Pottsville, PA 17901
Sullivan County Community College	112 College Road, Loch Sheldrake, NY 12759
SUNY - Delhi	2 Main Street, Delhi, NY 13573
SUNY - New Paltz	75 S. Manheim Blvd., New Paltz, NY 12561
SUNY - Oneonta	Ravine Parkway, Oneonta, NY 13820
Sussex County Community College	One College Hill Road, Newton, NJ 07860
The Commonwealth Medical College	150 North Washington Avenue, Scranton 18503
The Commonwealth Medical College	15 South Franklin Street, Wilkes-Barre, 18711
University of Scranton	Linden Street and Monroe Avenue, Scranton, PA 18503
Warren County Community College	475 Route 57 West, Washington, NJ 07882
Wilkes University	P.O. Box 111, Wilkes-Barre, PA 18766

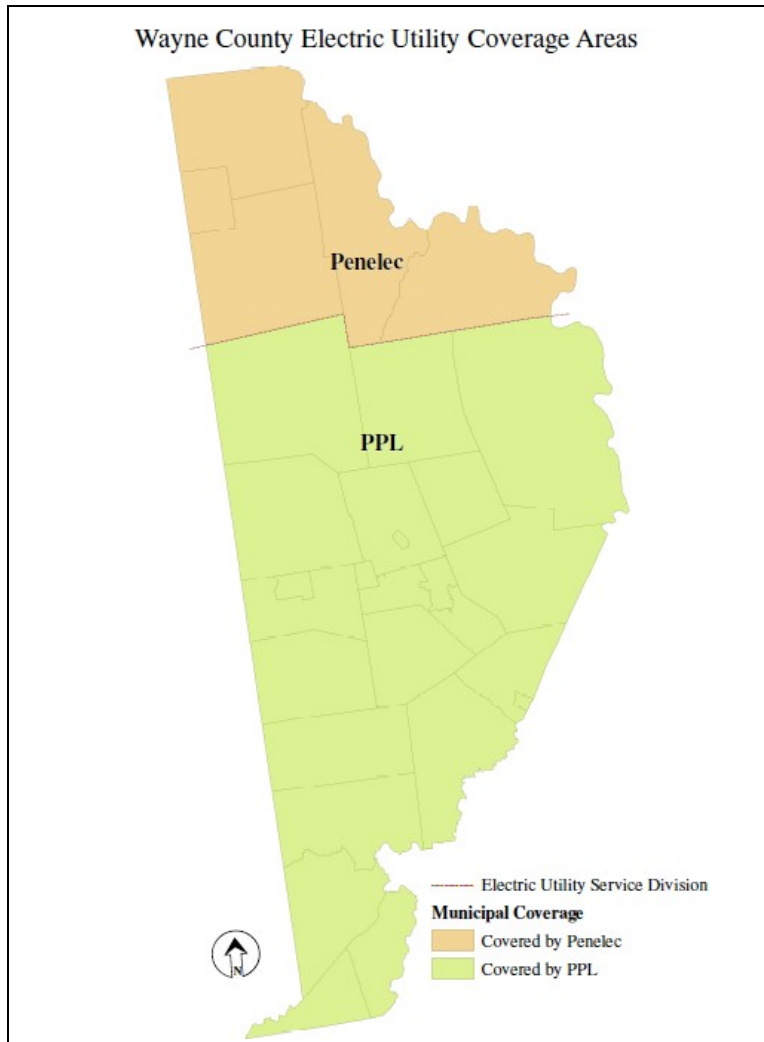
Source: Shepstone Management Company

Wayne County Comprehensive Plan Update

Public Utilities and Services

Electric service in Wayne County is provided by two electric public utilities. Penelec, based in Akron, Ohio provides electric services to northern Wayne County. It serves Buckingham, Preston, Scott and Manchester Townships and Starrucca Borough. It is currently merging operations with other First Energy entities.

Pennsylvania Power and Light (PPL) is the largest of the two electric companies serving Wayne County residents. PPL serves all areas of the County not served by Penelec. A map identifying electric utilities serving Wayne County residents follows.



Telephone services in Wayne County are provided by several telephone companies, with Verizon being the largest. Verizon serves Hamlin, Honesdale, Lake Ariel, Lake Como, Newfoundland, and the Lake Wallenpaupack area. Verizon also has the largest number of connections in the County. Amongst the other providers within Wayne County are LHTC Broadband (which has acquired several Communications companies in the region), and North-Eastern Pa Telephone Co.

Verizon, LHTC Broadband, and North-Eastern Pennsylvania Telephone each provide high- speed internet

Wayne County Comprehensive Plan Update

access services. North-Eastern Pennsylvania Telephone, and Hancock Telephone have both become all-purpose communication service providers, offering combinations of telephone, internet, and cable television services. Broadband internet service is also available via other cable television services, including Adams Cable Television (Carbondale) and Blue Ridge Communications (Palmerton).

Table III-8: Public Utilities Serving Wayne County

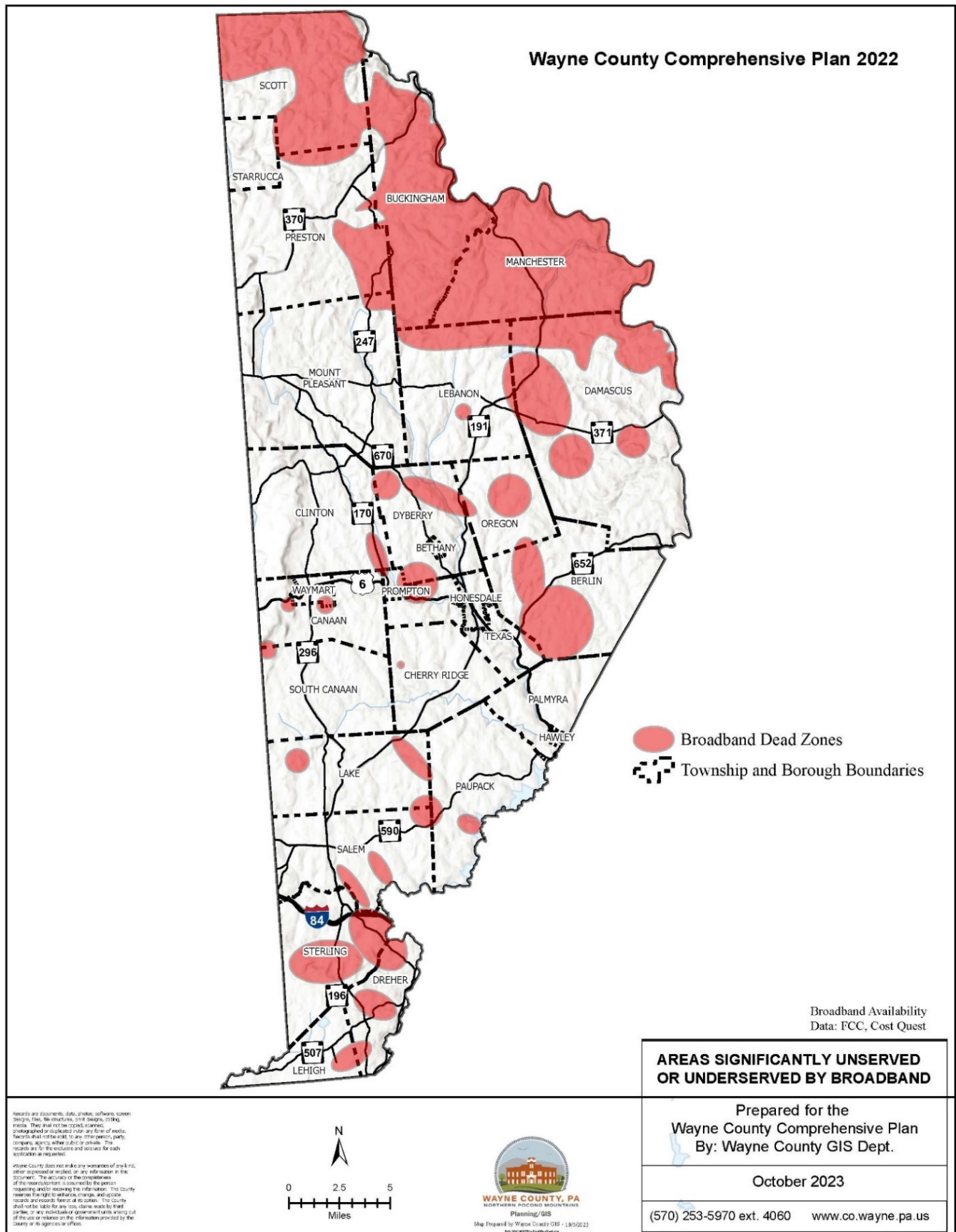
Utilities	Services	Service Areas
Electric		
Penelec (First Energy)	Electric	Buckingham, Manchester, Preston, Scott, Starrucca
PPL	Electric	Balance not served by Penelec
Telephone		
Adams Cable Service	Cable TV Internet Telephone	Scott, Starrucca, Preston, Mount Pleasant, Sterling, Salem, Lake, South Canaan, Honesdale, Waymart, Canaan, Clinton
Hancock Telephone Company	Cable TV Internet Telephone	Buckingham, Scott, Preston
Verizon	Internet Telephone	Beach Lake, Galilee, Hamlin, Hawley, Honesdale, Lake Ariel, Lake Como, Lake Wallenpaupack Area, Newfoundland
LHTC Broadband	Cable TV Internet Telephone	Palmyra, Waymart, South Canaan, Canaan, Cherry Ridge, Clinton, Lake
NEP Telephone Company	Cable TV Internet Telephone	Scott, Preston, Starrucca, Pleasant Mount, Clinton, Honesdale, Dyberry, Bethany, Prompton, Texas, Canaan, Waymart
Blue Ridge	Cable TV Internet Telephone	Honesdale, Bethany, Beach Lake, Lake Wallenpaupack Area, Newfoundland, Damascus, Cherry Ridge
Natural Gas		
UGI Penn Natural Gas	Gas	Hawley, Honesdale, Waymart

Source: Utility companies

As these various communications companies all broaden their range of services and satellite services expand, the communications options have greatly expanded for Wayne County residents.

While more and more households are gaining access to high-speed internet service, there are still many areas of the county where neither internet nor reliable cellular phone services are available, which have been identified by the Accelerate Wayne Project (see Map on page III-18).

Wayne County Comprehensive Plan Update



Wayne County Comprehensive Plan Update

These areas have been targeted in two recent grant applications submitted by WEDCO to the PA Broadband Authority. Table III-8 provides a listing of all electric utilities and telephone companies serving Wayne County. This table identifies the company, the total connections for each company within the County and each company's service areas within the County.

UGI Penn Natural Gas services Hawley, White Mills and Honesdale. This is an important asset for commercial and industrial development and not generally available in most rural areas.

Sewer Systems

Sewage disposal in Wayne County is largely accomplished with individual on-lot subsurface disposal systems. Much of the County has poor soil but the Commonwealth has expanded the range of on-lot systems permitted. Therefore, within low density areas this is the preferred option both economically and environmentally. Areas of higher density demand central sewage, collection, and treatment. There are private systems serving individual commercial and residential developments and six municipal authorities serving larger communities.

One such authority, the South Wayne County Water & Sewer Authority services the Hideout, a large private residential community located in Salem and Lake Townships. The Authority recently received a Water and Waste Disposal Loan and Grant to upgrade the infrastructure and wastewater treatment plant which was over 40 years old.

The Manchester Township Sewer and Water Authority services another residential community, Reflection Lakes. The Authority was created to develop and operate the central system for this recreational vehicle camping and mobile home community. The Central Wayne Regional Sewer Authority is the largest of these authorities in terms of treatment capacity. It serves most of Honesdale Borough, portions of Texas Township, Cherry Ridge Township and Berlin Township. The Authority is managed by a six-member Board and Entech Engineering.

The Waymart Municipal Authority's sewage collection and treatment system serves Waymart and Canaan Township. Currently the Waymart Area Authority services approximately 800 residential and non-residential customers including the Federal Prison and State Correctional Facility, Salvation Army Facility and R.D. Wilson School.

The Hawley Sewer Authority's sewage treatment plant, which is physically located in Lackawaxen Township, Pike County provides secondary treatment with effluent discharge to the Lackawaxen River. The system serves the Borough of Hawley and parts of Palmyra Township, Wayne County. There are approximately 657 residential & non-residential customers.

The Beach Lake Municipal Authority operates a 115-connection sewer collection and treatment system serving this small Berlin Township community. There is a recognized need for additional central sewer facilities to encourage support for housing & economic development.

Water Supply Facilities

Most Wayne County residents are served by individual water supply wells. There are, nonetheless,

Wayne County Comprehensive Plan Update

numerous public and private central water systems throughout the County, many of them serving small residential communities. Most of the service is provided by five water companies.

The Southern Wayne County Municipal Authority system serves the Hideout. Three other public water companies serve the Hawley, Honesdale, Waymart, Gouldsboro (Lehigh Township), Browndale and Hamlin areas. The Pocono Waterworks Company also serves several private residential communities within the County via seven groundwater wells within Wayne and Lackawanna Counties.

There are no communities with pressing water supply needs, all the major existing systems have been substantially upgraded to meet community needs. Most of the County possesses very good ground water supplies for individual water wells. There is a recognized need for additional central water facilities to encourage support for housing & economic development.

Fire, Ambulance and Rescue Facilities

All of Wayne County, like many others across the Commonwealth, is served primarily by volunteer emergency and rescue organizations that rely heavily on local contributions for funding. Critical to the on-going operation of these local fire departments and local volunteer ambulance services is the recruitment and retention of volunteers.

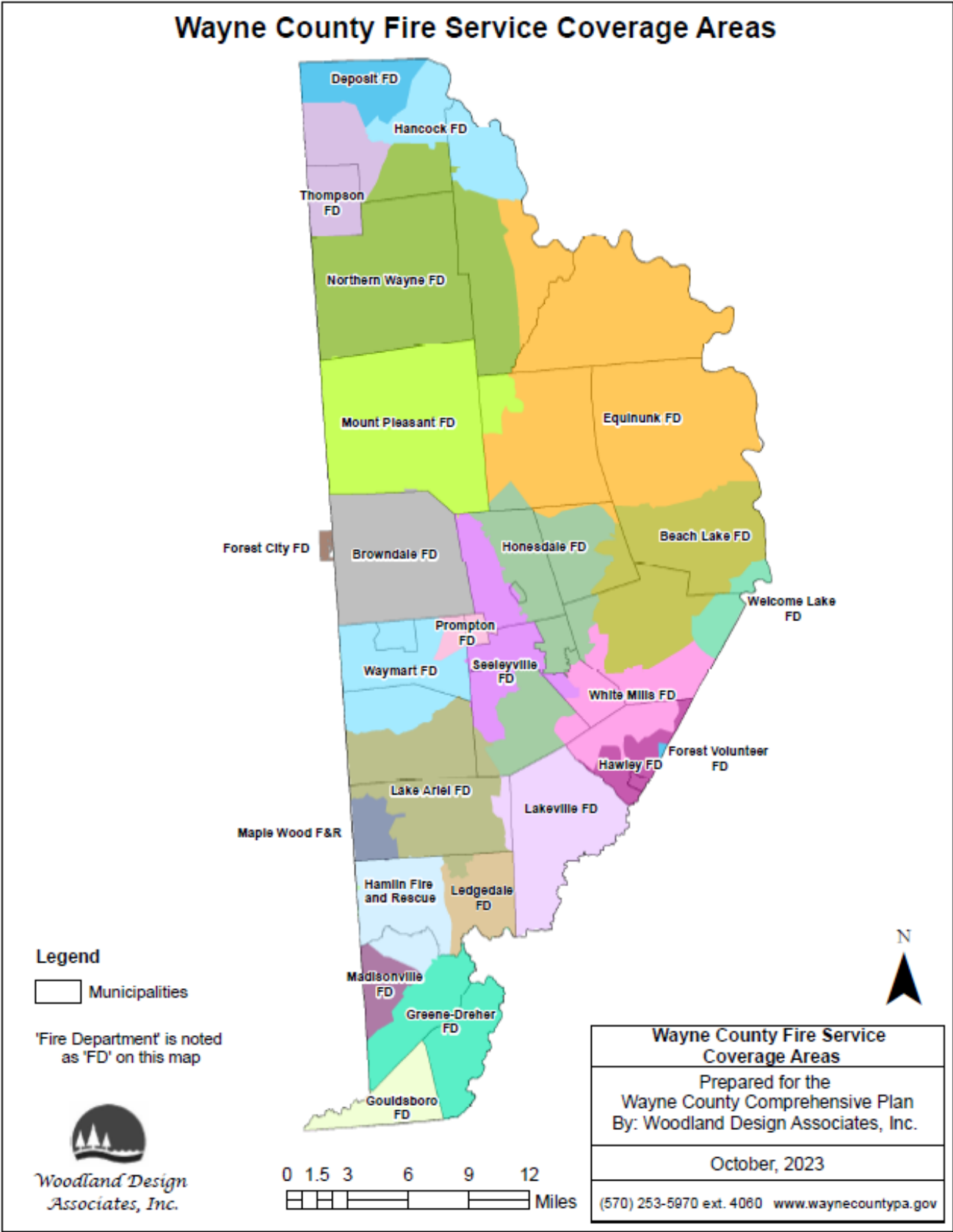
Fire protection services in Wayne County are provided by 27 volunteer fire departments, four of which comprise the Honesdale Fire Department. Table III-9 summarizes stations for each.

Table III-9: Fire Department

Companies	Company Number	Stations	Companies	Company Number	Stations
Beach Lake	23	1	Lakeville	18	1
Browndale	43	1	Ledgedale	36	1
Deposit	-	1	Maplewood	68	1
Equinunk	65	2	Madisonville	56	1
Forest City	41	1	Northern Wayne	3	1
Gouldsboro	17	2	Pleasant Mount	28	1
Green-Dreher	23	1	Prompton	94	1
Forest	81	1	Seelyville	12	1
Hamlin	67	1	Thompson	-	1
Hancock	28	1	Vandling	42	1
Hawley	9	1	Waymart	75	1
Honesdale	13	4	Welcome Lake	26	1
Jefferson	29	1	White Mills	32	1
Lake Ariel	1	3			

Notes:

- (1) Not all the above depicted on the Fire Department Coverage Areas Map.
- (2) Several of the above fire companies are based in adjoining counties.
- (3) Ledgedale Fire Company has a dive team.



Wayne County Comprehensive Plan Update

There are, in addition to those fire companies located in Wayne County, numerous companies located in adjoining Pike, Susquehanna and Lackawanna Counties in Pennsylvania and Sullivan and Delaware Counties in New York State that provide mutual aid services to Wayne County fire departments.

All the fire departments within Wayne County, not unlike other areas in Pennsylvania, operate primarily with funds generated through yearly donations from individuals, private organizations, or other community groups as well as memberships. Many fire departments also receive some funding from the municipalities they serve through a “fire tax” or similar appropriation by local government. The provision of emergency services in Pennsylvania falls to the municipalities. Only 14 municipalities have a fire tax as of March 2023.

The major budget expense for all fire departments continues to be the purchase of new equipment and the maintenance of existing equipment. More than 82 fire engines, mini- pumpers, rescue trucks and tankers are owned and maintained by the fire departments throughout the County. Specialized equipment such as extrication tools (e.g., “Jaws of Life”) and UTV’s are expensive and can require special funding. Most fire departments also provide fire police services.

The 27 fire departments located in Wayne County are staffed primarily by volunteers. Most also have an active community association such as a fire department auxiliary, which assists with fundraising activities, picnics, and other special projects.

All fire departments within the County provide their member volunteers with special training on a regular basis. Drills are generally held weekly to allow volunteers to become familiar with specialized equipment. All fire departments within the County are now dispatched through the Wayne County Communications Center, with the exception of Gouldsboro.

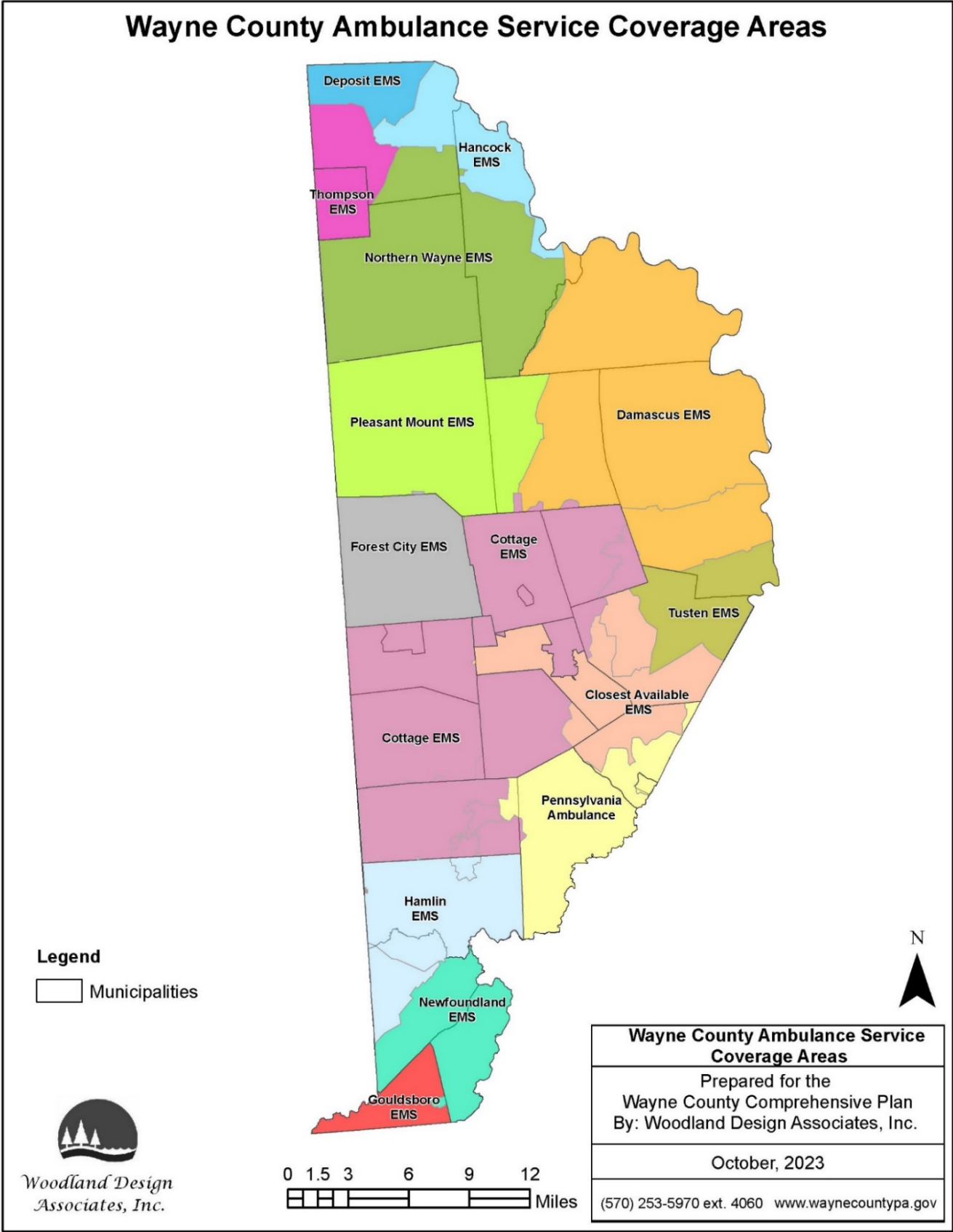
In recent years, many of the non-profit ambulance services across the County, which are volunteer based, have struggled to maintain enough volunteers to staff the facilities and teams on a 24/7 basis. This includes Honesdale Borough, which is currently not served by a local EMS team due to the service being driven out of business prior to 2020.

There are several commercial ambulances that serve the area, including Pennsylvania Ambulance and Cottage Hose Co. Ambulance service from Carbondale. Many of the volunteer services are located a considerable distance from Honesdale Borough, making the commercial ambulances the best option if other local ones such as White Mills are unable to answer a call.

The need for volunteers to fill these roles, which has been a struggle to this point, will only become more difficult to find as the County’s average age continues to increase. For profit emergency services will need to be considered by the Municipalities in the future, to give residents and visitors appropriate access to emergency care.

There are also various private ambulance services that operate within specific parts of the County. Basic Life Support (BLS) ambulance service requires at least one EMT to provide supervision.

Maps that identify the various fire and ambulance companies providing services to Wayne County residents and their service areas are found on pages III-18 and III-20.



Wayne County Comprehensive Plan Update

Cultural Facilities

There are seven public libraries in Wayne County managed by the Wayne Library Alliance (WLA). These include Wayne County (Honesdale), Hamlin, Hawley, Bethany, Lakewood, Newfoundland, and Pleasant Mount Libraries. The Wayne Library Alliance was created to manage and coordinate operations and services between these independent libraries for financial support, library materials, personnel and services for patrons. The Authority operates via funding from the County and donations where the County portion is approximately 40% of the total funding allocated.

The Wayne County Historical Society, located in Honesdale, is one of two primary museums in the County. The Historical Society operates with an Executive Director, small staff and volunteers. The funding sources for the Historical Society are primarily private donations and grants. Its main museum building, built in 1860, was originally the Delaware & Hudson Canal Company office.

The other primary museum located in the County is the Dorflinger Factory Museum, which provides a collection of world-renowned Dorflinger Glass. The museum is open April through November and contains more than 900 cut pieces of glass.

The Ritz Theater Company, The Wildflower Music Festival, Harmony in the Woods, The Cooperage Project, The Art Factory, the Wayne County Arts Alliance and others, offer residents entertainment, theater, music, art and more, as well as volunteer opportunities.

Health Care Facilities and Services in Wayne County

Wayne County residents are fortunate to have a full-service hospital located in the central portion of the County. Wayne Memorial Hospital has been serving the Wayne and Pike County area since 1920. The Hospital, located in Honesdale, is a 90 acute-care bed facility, including 50 in private rooms and an additional 14 beds dedicated to inpatient rehabilitation. The Hospital operates an Outpatient Rehabilitation Center, located at the Route 6 Mall located in Texas Township. The Hospital also operates another outpatient service facility in Hamlin. Additionally, Wayne Memorial Hospital also has an audiology building located on Main Street in Honesdale.

The Health Care System includes Wayne Memorial Hospital, Wayne Memorial Long-Term Care (Wayne Woodlands), Wayne Memorial Health Foundation and Wayne Health Services. Wayne Memorial Long-Term Care operates a 121-bed skilled nursing facility (Wayne Woodlands Manor) in Waymart.

Wayne Memorial Health Foundation develops, acquires, and manages resources that assist the Hospital, the other Health System entities and other allied health organizations in improving the health status of the community. The Foundation owns Wayne Health Services and the Stourbridge Mall, the only for-profit entities within the Health Care System. Wayne Health Services provides medical equipment for home health care needs and its income supports the other non-profit entities of the Health System. The Stourbridge Mall houses Wayne Health Services and other medical offices.

Wayne Memorial Health System also has a clinical affiliation with primary care practices that are part of their Community Health Centers, a federally qualified health center that is operationally separate from the Health System, functioning under the direction of an independent Board of Directors. There are a cluster of family

Wayne County Comprehensive Plan Update

health centers that include the Honesdale Family Health Center at the Stourbridge Mall; the Lakewood Family Health Center; the Waymart Family Health Center; the Together for Health Center at the Stourbridge Mall and Behavioral Health Services, at the Stourbridge Mall. Together for Health Dental Clinic, provides dental services to children on medical assistance, operates two locations.

Table III-10 provides an overview of the principal hospitals in the region that serve Wayne County residents offering a wide range of specialties within a reasonable driving distance of all County residents. The table summarizes only some of the key services offered by these hospitals.

Table III-10: Hospitals Serving Wayne County

Facility	Location	No. of Beds	Specialties
Barnes-Kasson County Hospital	Susquehanna, PA	58 skilled nursing	Family Health Clinic, Skilled Nursing, Home Health
Binghamton General Hospital	Binghamton, NY	220	General medical services
Catskill Regional Medical Center	Callicoon, NY	15	Emergency services, outpatient rehab, radiology services, short term nursing
Catskill Regional Medical Center	Harris, NY	218	Family practitioners, Hospitalist, Psychiatry, Pediatrics, Cardiology, etc.
Commonwealth Health Regional Hospital	Scranton, PA	186 acute care	Orthopedics, Robotic Surgery, Cardiac Care, Stroke Care, Neurology
Geisinger Community Medical Center	Scranton, PA	293	Level II Trauma Center & Electronic ICU
Commonwealth Health Moses Taylor Hospital	Scranton, PA	214	Obstetrics, Neonatal care and Senior Behavioral Health
Lehigh Valley Hospital	East Stroudsburg, PA	230	Level III Trauma Center
Lehigh Valley Hospital-Dickson City	Dickson City, PA	24 private inpatient beds	Robotic Technology, Orthopedic Surgery, Joint Replacement, Spine, General surgery, etc.
Our Lady of Lourdes Memorial Hospital	Binghamton, NY	267	Hospice Program, Regional Cancer Center
St. Luke's Hospital, Monroe Campus	Stroudsburg, PA	134	General medical services, Cancer Center, Trauma center
Wilkes-Barre General Hospital	Wilkes-Barre, PA	412	Heart and Vascular Care
Wayne Memorial Hospital	Honesdale, PA	90 acute, 50 private, 14 inpatient rehabilitation	Family practitioners, cardiology, hospitalist, new beginnings birthing center

(Source: Woodland Design Associates, Inc. research)

As Wayne County's population continues to grow older, the need to maintain good quality long- term care

Wayne County Comprehensive Plan Update

options within the County must be a priority. Extended long-term care options for Wayne County residents are limited to three primary facilities within the County.

Brighten at Julia Ribaud Nursing Home, located in Lake Ariel, is a privately owned facility. This nursing home has 120 beds. Ellen Memorial Health Care Center located in Honesdale is also privately owned. It has 128 beds. The Wayne Woodlands Manner located in Waymart is owned and operated by Wayne Memorial Long Term Care, an affiliate of the Wayne Memorial Health System. This non-profit nursing home has 117 beds.

Wayne County residents also have access to four (4) personal care facilities within the County. Table III-11 identifies these facilities, their bed capacities, and types of operations.

Table III-11: Wayne County Personal Care Facilities

Facility	Beds	Type
Bethany Village	70	Profit
Briarwood Manor	20	Profit
Devereux Pocono Center Dreher Manor	24	Non-Profit
Devereux Pocono Center Stuart House	8	Non-Profit

Source: Waynecounty.gov

Personal care facilities provide services to individuals who have difficulty with the activities of daily living, but do not need nursing services daily. Over-regulation of these facilities can have a negative impact on some existing facilities and a disincentive for the further development of new ones.