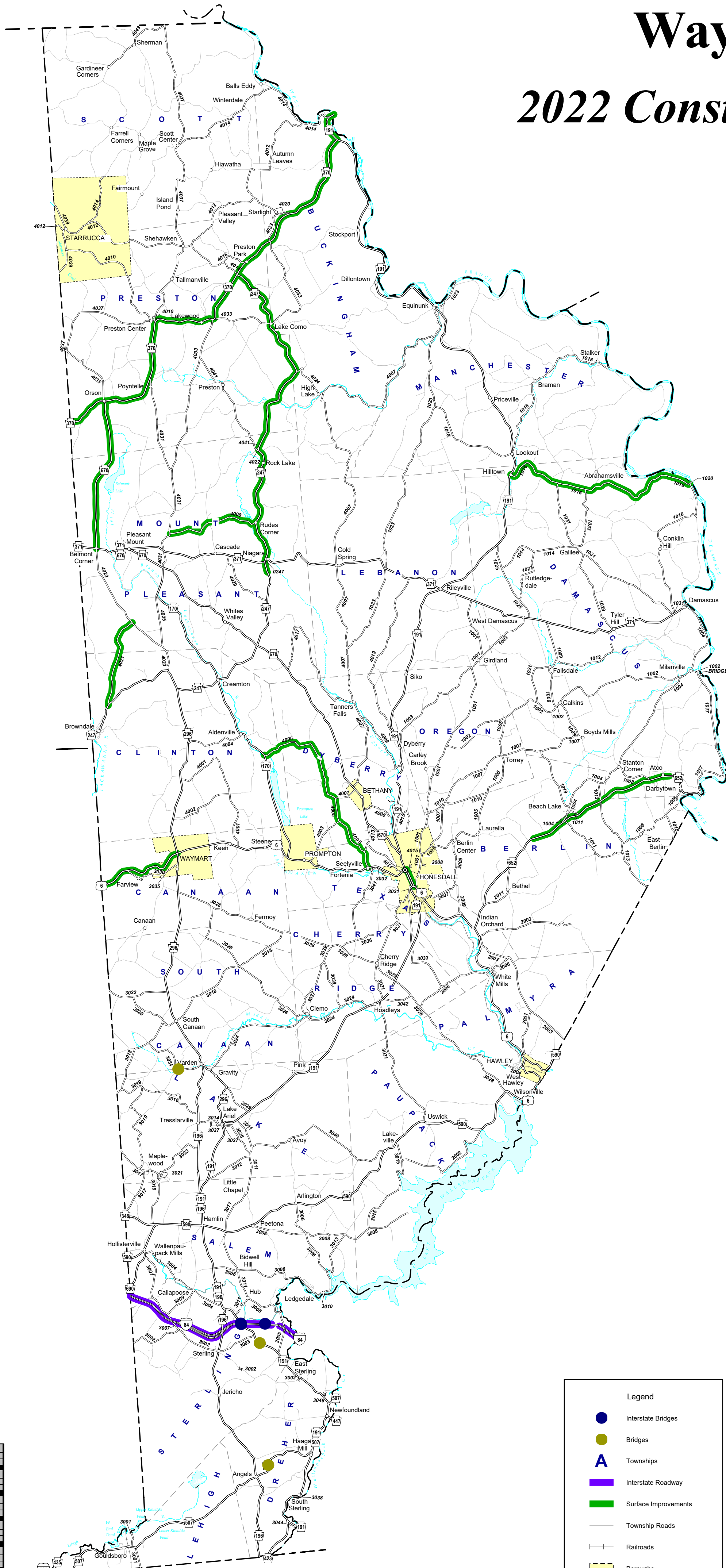


Wayne County

2022 Construction Season



Shown on these maps are projects started in previous construction seasons and projects that will be bid this calendar year but may span beyond the 2022 construction season.

CRACK SEALING & LINE PAINTING
CRACK SEALING & LINE PAINTING WILL BE PERFORMED ON VARIOUS STATE ROUTES THROUGHOUT THE COUNTY
GUIDE RAIL
DAMAGED GUIDE RAIL AND MEDIAN BARRIER WILL BE REPAIRED AT VARIOUS LOCATIONS THROUGHOUT THE COUNTY
TREE TRIMMING
TREE TRIMMING WILL BE PERFORMED AT VARIOUS LOCATIONS ON STATE ROUTES THROUGHOUT THE COUNTY
BRIDGE MAINTENANCE
BRIDGE MAINTENANCE ACTIVITIES WILL BE PERFORMED ON VARIOUS BRIDGES THROUGHOUT THE COUNTY
SAFETY IMPROVEMENTS
SIGNING AND LIGHTING WILL BE UPGRADED AT VARIOUS SITES THROUGHOUT THE DISTRICT
PRODUCED BY: GEOGRAPHIC INFORMATION DIVISION BUREAU OF PLANNING & RESEARCH FOR FURTHER INFORMATION, OR COMMENTS CONTACT: GIS COORDINATOR AT (202) 963-3512

Legend	
	Interstate Bridges
	Bridges
	Townships
	Interstate Roadway
	Surface Improvements
	Township Roads
	Railroads
	Boroughs

SURFACE IMPROVEMENTS			
S.R.	ECMS	DESCRIPTION	MILES
6	114065	Roosevelt Highway, Paving	3.18
6	115125	Main Street, Resurfacing	1.31
191	117869	Hancock Highway, Base Repair	1.08
247	117869	Creamton Drive, Base Repair	12.02
370	117869	Crosstown Highway, Base Repair	14.63
652	114065	Beach Lake Highway, Paving	5.23
670	117869	Belmont Turnpike, Base Repair	5.25
1016	115125	Callicon Road, Seal Coat	7.35
4005	114065	Beech Grove Road, Paving	6.79
4008	117869	Niagra Drive, Base Repair	3.28
4021	117869	Pleasant Mt. Drive, Base Repair	3.15
Total			63.27

INTERSTATE BRIDGES		
S.R.	ECMS	DESCRIPTION
84	91540	EB/WB over S.R. 191
84	91540	EB/WB over Butternut Creek

BRIDGES		
S.R.	ECMS	DESCRIPTION
191	116202	over Butternut Creek, Sterling Twp.
507	112743	over Mill Creek, Dreher Twp.
3034	67593	over Middle Creek, Canaan Twp.

INTERSTATE ROADWAY		
S.R.	ECMS	DESCRIPTION
84	76861	EB/WB Reconstruction
84	91540	EB/WB Mill & Fill