

Find us on the web at: <https://waynecountypa.gov/101/human-services>

The Wayne County Area Agency on Aging would like to thank our elected officials for their support!

Local Government Officials

Wayne County Commissioners:

Brian Smith, Jocelyn Cramer, James Shook

<p>Lisa Baker (R) State Senator, District 20 2512 Route 6 Suite 3 Hawley, PA 18428 TEL (570) 226-5960</p>	<p>Serving: Berlin, Bethany, Buckingham, Clinton, Damascus, Dyberry, Hawley, Lebaon, Manchester, Mount Pleasant, Oregon, Palmyra, Paupack, Preston, Scott, Starrucca</p>
<p>Rosemary Brown (R) State Senator, District 40 487 Cortez Rd. Jefferson Township, PA 18436 TEL (570) 213-5705</p>	<p>Serving: Canaan, Cherry Ridge, Dreher, Honesdale, Lake, Lehigh, Prompton, Salem, South Canaan, Sterling, Texas, Waymart & Monroe</p>
<p>Jeffrey Olsommer (R) State Representative, District 139 2523 Route 6 Suite 2 Hawley, PA 18428 TEL (570) 226-5959</p>	<p>Serving: Cherry Ridge, Dreher, Hawley, Lake, Lehigh, Palmyra, Paupack, Salem, South Canaan, Sterling</p>
<p>Jonathon Fritz (R) State Representative, District 111 32 Commercial St. Suite 300 TEL (570) 253-5533</p>	<p>Serving: Berlin, Bethany, Buckingham, Canaan, Clinton, Damascus, Dyberry, Honesdale, Lebanon, Manchester, Mount Pleasant, Oregon, Preston, Prompton, Scott, Starrucca, Texas, Waymart</p>



Suggested meal price: \$3.00 for 60 and over \$9.00 all others.

***Milk included with all meals.**

***Butter included with breads with this symbol (*)**

***Menu subject to change.**

<p>1) Juice Turkey Pot pie/ biscuit Roasted Brussel sprouts Pumpkin mousse</p> 	<p>2) Orange juice Cheese Omelet Turkey sausage Breakfast potatoes Wheat bread * Applesauce</p> 	<p>3) Minestrone soup HB-Juice Pasta with meatballs in sauce Broccoli Wheat bread * Fresh apple</p> 	<p>4) Orange juice Tuna noodle casse- role Carrots Wheat bread * Applesauce</p> 	<p>5) Sweet & sour Pork Cantonese Cauliflower rice Stir fried vegetables Wheat bread * Fresh cut fruit</p> 
<p>8) Orange juice Fish sticks Macaroni & Cheese Stewed tomatoes Wheat bread * Mandarin oranges</p> 	<p>9) Butternut squash soup HB-Juice Chicken with Mush- rooms Mashed sweet pota- toes Cauliflower Wheat bread * Pudding</p> 	<p>10) Juice Roast pork Cabbage and noo- dles Green beans Rye bread * Fresh orange</p> 	<p>11) Sloppy joe on a wheat bun Red potatoes Broccoli Fresh apple</p> 	<p>12) Cheese ravioli With sauce Italian blend Italian Bread Cottage cheese with peaches</p> 
<p>15) Hanukkah Rosemary roasted chicken Potato Latkes Candied Carrots Sweet roll/butter Applesauce</p> 	<p>16) Spinach & cheese bake Roasted breakfast potatoes Winter blend Wheat bread * Fresh orange</p> 	<p>17) Salisbury steak with gravy Mashed potatoes Cauliflower Wheat bread * Fresh apple</p> 	<p>18) Christmas Dinner Ham with glaze Whipped sweet po- tatoes Peas with pearl on- ions Wheat roll * Warm gingerbread cake with lemon sauce</p> 	<p>19) Juice Turkey & gravy Roasted red pota- toes Broccoli Wheat bread * Pudding</p> 
<p>22) Lentil Soup HB-Juice Pork with orange sauce Baked potato Steamed broccoli Wheat bread * Pineapple chunks</p> 	<p>23) Juice Shepherd's pie Mashed potatoes California blend Rye bread * Chocolate pudding</p> 	<p>24) Breaded Had- dock Red potatoes Carrots Wheat bread * Fresh mix fruit</p> 	<p>Closed for Christmas</p> 	
<p>29) Meatloaf with gravy Scalloped potatoes Roasted broccoli Wheat bread * Pineapple chunks</p> 	<p>30) New Year's Eve Party Pork with sauer- kraut Mashed potatoes Carrots Rye bread * Warm cinnamon apple slices</p> 	<p>31) Juice Vegetarian chili over noodles Cauliflower Corn bread * Vanilla pudding</p> 	<p>*Home Delivered Meals will reflect the Decem- ber 26th menu, but the Senior Centers will be closed and no lunch will be served.</p> <p>*The offices in the Aging Building will be open on Friday December 26th.</p> <p>Happy Holidays to All!</p>	

Honesdale Senior Center– December Events



Friday December 5th– Birthday Friday

Thursdays December 4th, 11th, & 18th– Christmas Crafts with Sandy

Tuesday December 16th– Northeast Sight meets

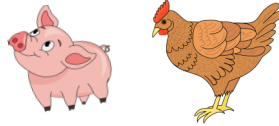
Thursday December 18th– Christmas Luncheon & Holiday Sing-a-long. Reserve your spot for a special Christmas meal of glazed ham, sweet potatoes, peas, and warm gingerbread cake for dessert!

Thursday December 25th & Friday December 26th– Center Closed for Christmas Holiday

Tuesday December 30th– New Year's Eve Celebration. Come ring in the New Year and enjoy a special Pork & Sauer-kraut holiday meal.

****Schedule Subject to Change****

Fun Fact: A lot of people follow the superstition that if you eat pork on New Year's Day it will bring you good fortune because pigs root forward, but if you eat chicken it will bring financial misfortune because chickens scratch backwards! Which will you choose??



Join The Fun

Come join us for a friendly game of bridge!
Whether you're a seasoned player or just brushing off the cobwebs, everyone is welcome. We meet Monday mornings at 10:30 AM at the Honesdale Senior Center. If you'd like to join, please give Bonnie a call beforehand at 203-362-7645. We'd love to have you!



- Bob Bryden

Grief Support Group
HONESDALE SENIOR CENTER
323 10th Street
Honesdale, PA 18431

Virtual option available upon request

Monthly on the 2nd & 4th Wednesday

2:00-3:30 PM

Please RSVP if you plan to attend (570) 253-4262

Facilitated by volunteers Anthony Campbell & Bill Reitsma

HONESDALE ACTIVITIES

<u>Monday</u>	<u>Tuesday</u>	<u>Wednesday</u>	<u>Thursday</u>	<u>Friday</u>
11:00-3:00 Bridge 1:00 Canasta <i>*schedule subject to change</i>	10:30-11:30 Exercise Class 1:00-4:00 Billiards Shuffleboard	10:00-11:00 Exercise Class 1:00-2:00 BINGO 1:00-4:00 Hozzie Card Game 2:00-3:30 Caregivers Support Group 3rd Wed. each month 2:00-3:30 Grief Support Group 2nd & 4th Wed. each month	10:00 Crafts/ Crocheting 2nd and 4th Thur. 1:00-4:00 Mahjong Group, Shuffleboard, Billiards	10:30-11:30 Exercise Class 1:00 Rummikub tile game Billiards Shuffleboard

Hamlin December Events

Tai Chi – Mondays at 10:00 AM

Chair Yoga – Class times TBA

Healthy Steps in Motion – Mondays at 11 AM, Wednesdays at 10 AM, and Thursdays at 1 PM

Bingo – Tuesdays at 1 PM and Fridays at 10 AM

Christmas Tree Decorating -Monday December 1st at 1 PM. Enjoy Christmas music and hot cocoa as you decorate our center for the holiday.

Corette's Barn Quilt Class – Tuesday December 2nd and Tuesday December 16th at 10 AM

Angels with Kelly Craft– Friday December 12th at 1 PM in the Thrive Room.

Nutrition Presentation –Tuesday December 17th at 11: 30 AM “Facts of Fiber, the Importance of Protein & Snacking Healthy” Facilitated by Lynn and Amy.

Christmas Celebration – Wednesday, December 18th. Complementary special entertainment by Jim Cerminaro, Christmas luncheon, and much merriment! Ugly sweater competition. A prize for the two ugliest! Bingo at 1 PM

Christmas Bingo - Tuesday December 24th at 10 AM with holiday refreshments.

NYE Party & Bingo, Monday December 30th starting at 10 AM. Enjoy games, special entertainment by Randy Light and “Ringing In the New Year” toast! Bingo taking place at 1 PM.

Center Closed – December 25th In observance of Christmas

Center Closed – January 1st. In observance of New Years' Day

***Schedule Subject To Change**

Fran Cirelly– December 3rd

Geraldine Fuggetta– December 6th

Susan Johnson– December 6th

Carolyn Lennan– December 7th




Alex Vegh– December 10th

Joan Bowers– December 15th



The Hamlin exercise members requested another day of HSIM (Healthy Steps in Motion Exercise). Our times have changed, HSIM is taking place on Mondays at 11 AM, Wednesdays at 10 AM, and Thursdays at 1 PM.



<u>Monday</u>	<u>Tuesday</u>	<u>Wednesday</u>	<u>Thursday</u>	<u>Friday</u>
9-12 Pinochle (Thrive Room) Fun in Games 10-11 Tai Chi 11-12 HSIM 1-3 Poker (Thrive Room) 1-3 Pinochle & Games	9-12 Pinochle & Fun in Games (Main Room) 10:30-12 Program or craft (Thrive Room) 1-2 Bingo 2-3 Fun in Games	10-11 HSIM 1-3 Nu-Step Machine 1-3 Shuffleboard & Fun in Games	10-11 HSIM 9-12 Texas Hold'em 1-2 HSIM 1-3 Fun in Games, Texas Hold'em & Crafts Your Way 1-3 Poker	9-12 Pinochle 10:00 Bingo 1-3 Pinochle & Fun in Games (Every other Friday) 1-2 Chair Yoga (start date TBA)
				



December 8th— Monday—International Brownie Day. Bake some brownies and bring them in to share with everyone.

December 9th—Tuesday- 10:00 am -National Christmas Card Day. Come to the center with your creativity and create a homemade Christmas Card.

December 9th— Gina from Representative Olsommer's Office will be here from 9:00am-12:00pm to assist you with your LIHEAP, Car Registrations, Voter Registrations, Handicap Permits ,and any other service you may need. Please stop by and say hello.

December 10th— Wednesday 1:30-2:30 PM—Come and make a Christmas Craft Supply (cost to be determined, dependent upon craft made). Please call for details and to register.

December 12th— Friday— 10:30 –11:30 am Breakfast Christmas Paint— Supply cost is \$7.00.

December 12th and 14th—Friday thru Sunday—Hawley's Winterfest—Come to downtown Hawley and partake in the season's festivities.

December 15th -Monday —David P. Shallcross Director of Senior Protection Unit will be here to give a presentation on holiday scams, online shopping, porch pirates, and other scams.





December 16th-Tuesday—National Chocolate Covered Anything Day— Be creative and make a chocolate covered delight to share.

December 16th Tuesday— 11:00am—2nd Annual Christmas Cookie Affair—Be Santa's helper and support our center fundraiser by baking and or purchasing our Christmas delectables. Cost will be \$10 a box. \$20 for a tin. These are all homemade and delicious cookies and candy.

December 18th Thursday— 10:00 Christmas Celebration/Gift Exchange and Special Bingo \$3.00 a card. Richie will be delighting us with Christmas tunes as we rock our Christmas PJ's . Lunch will be glazed ham with whipped sweet potatoes, peas with pearled onions, gingerbread cake with lemon sauce. Bring a NEW store-bought gift between \$10-15 for our Christmas Exchange. Receipt must be attached to the gift. Please sign up by December 10th if you wish to participate in the gift exchange.

December 22nd-Monday—9:00-12:00pm —Frank Araujo, our Veterans Affairs Officer, will be here to answer all of your questions.

December 30th -Tuesday—New Year's Eve Celebration—Celebrate NYE Hawley Style. 9:00 AM—Start the day off with a French Toast breakfast and finish it with a sparkling toast. Music, Food , Friends, lots of laughs. Bingo and fun!!

<u>Monday</u>	<u>Tuesday</u>	<u>Wednesday</u>	<u>Thursday</u>	<u>Friday</u>
10:30-2:30 Ceramics 10:30-11:30 Exercise 1-2:30 Mahjong	10:00-11:00— Ukulele with Todd 10:30--11:30 Yoga with Jamie \$5.00/class 1-2 Bingo	10-11 Tai Chi with Peter Brown \$5.00/ class 10:30-11:15 HSIM— Exercise Class 10:30-2:30 Ceramics 1-3 Poker	10:30-2:30 Cards 1-2 Bingo	10:30-11:30 Exercise
				

Northern Wayne Senior Center December Schedule

Thursday December 4th— Christmas Party! Children from Preston Elementary will be caroling. Christmas Craft.

10:30 Exercise Class

1:00 Bingo

Lunch Menu: Juice, Soup, Tuna Fish salad sandwich, Bean salad, Pumpkin Mousse.



- ◆ Located at the Northern Wayne Fire Company, 1663 Crosstown Highway, Lakewood
- ◆ Meets at 10am the 1st & 3rd Thursdays March-October
- ◆ Meets at 10am the 1st Thursday November-February (weather permitting)
- ◆ Call Ginny (570) 253-5540 for information & lunch reservations



On Friday October 31st the Hamlin Senior Center had their annual Halloween party. Pictured above left are the winners of the costume contest, Vangie as Mother Earth, Carol as Little Red Riding Hood and Oliver as a Ghost Criminal and on the right are all the folks that dressed up. A great time was had by all who attended!

Complimentary Supplies for the Community

The Honesdale Senior Center often receives generous donations of gently used walkers, canes, wheelchairs, shower benches, and other supplies and equipment. In addition, we have adult protective undergarments available to ensure comfort and dignity for those who require them. Our mission is to assist you in maintaining your independence and improving your quality of life. If you are in need of any of these items, please don't hesitate to ask a member of our dedicated Senior Center staff if we have what you need. We are here to help and would be honored to provide support in any way we can.



Fun Holiday Events at Hamlin Heights



On October 21st, residents of Hamlin Heights teamed up with members of the Hamlin Senior Center and Theresa from Julia Ribaud Extended Care Center for a fun-filled afternoon crafting adorable stuffed pumpkins! (Some of the cheerful creations are pictured left.) Everyone had a wonderful time socializing, laughing, and getting into the festive autumn spirit together. It was the perfect chance to meet new friends and try new activities from right here in our community. We hope to see you at our Senior Center events each month!

On October 30th, Hamlin Heights residents hosted a **SPOOKTACULAR** Halloween-themed monthly luncheon in the community room (pictured right) complete with costumes, tasty treats, and plenty of smiles. The Holidays are already looking festive— so keep an eye out for our Thanksgiving potluck and Christmas holiday crafts / community days coming soon! We love seeing familiar faces and new ones alike at our Community Events each month. Hope to see you there! Happy Holidays!



For Those receiving Home Delivered Meals



We have switched to PLASTIC TRAYS!

- ◆ Oven and microwave safe
- ◆ Freezable to -40°F
- ◆ Oven safe to 350°F for 30 minutes on a sheet pan
 - ◆ Reheating of sealed trays: up to 180°F
- ◆ Sealed compartments: no cross-contamination
- ◆ Easy to open, just vent film & heat
- ◆ **Environmental & Sustainable**



If you prefer not to heat and/or eat in the plastic tray, you can transfer the meal onto a microwaveable plate, heat, and **ENJOY!!



- ◆ All Meals are Frozen and delivered weekly
- ◆ Delivery Days are subject to change due to inclement weather, holidays, and staffing issues.
- ◆ Please call the office if you need to make any changes to your meal schedule
- ◆ If you are unable to answer the door to accept the meals, please place a cooler outside and be sure to remove the meals as soon as possible.

WHAT IS THE CAREGIVER SUPPORT PROGRAM?

Who is Eligible?

- Individuals 18 or older caring for an older adult (60+)
- Parents (55+) caring for an adult child with a disability
- Grandparents (55+) raising grandchildren

What is Covered?

- Monthly reimbursement for pre-approved caregiving expenses
- Assistance with daycare, summer camp, or Adult Daily Living Center costs

How do I Qualify?

- Monthly reimbursement is determined by the care receiver's total household income
- Must be a Wayne County resident

Think you might Qualify?

Contact the Wayne County Area Agency on Aging at (570) 253-4262 and ask to speak with the Intake Department. Ask about the Caregiver Support Program!



Wayne Memorial Hospital Alzheimer's Support Group

Presented by: Alzheimer's Association of greater Pennsylvania

When: First Tuesday monthly from 5:30-6:30 pm

Where: Wayne Memorial Hospital-David Katz Room, 601 Park Street, Honesdale PA 18431

Alzheimer's Association support groups, conducted by trained facilitators, are a safe place for people living with dementia and their care partners to:

- Develop a support system
- Exchange practical information on challenges and possible solutions.
- Talk through issues and ways of coping.
- Share feelings, needs and concerns.
- Learn about community resources.
- All are welcome, for information please call 800-272-3900 or go online to alz.org



The Heart of the Season:
Connection, Joy, and Reflection



The holiday season is more than decorations and gifts. It's a time to reflect on what truly matters: connection, joy, and simple moments that bring meaning to our lives. For most of us, it's a chance to pause, appreciate relationships, and nurture both our own well-being and that of those around us.

Connection is everything. Spending time with family, friends, neighbors, even attending a community event can foster a sense of belonging and purpose. Simple acts of kindness can brighten someone else's day while lifting your own spirit.

Joy doesn't have to come from grand gestures. Small, intentional moments can make the season meaningful: listening to music, baking a favorite recipe, sharing memories, or taking time to appreciate the beauty of the season. These mindful practices help us savor the present and cultivate gratitude.

Reflection allows us to honor the year behind us and envision the year ahead. It's a chance to celebrate accomplishments, acknowledge challenges, and focus on personal growth and resilience.

Remember, none of this is possible without YOU. Prioritize rest, embrace moments of calm, and reach out if life feels overwhelming. By nurturing your own well-being, you're better able to care for those around you.

As 2025 comes to a close, we want to remind everyone that hope, healing, and community are always within reach, and no one must face the season alone. If safety or trauma is a concern for you or someone you know, support is always available. Contact VIP at 570-253-4401 or visit vipempowers.org for confidential services and information.



PA MEDI staff are available to assist you during the Medicare Annual Enrollment Period. (AOEP) The program runs from October 15th to December 7th 2025. During this time you will be able to join, drop or switch Medicare Prescription Drug Coverage or Medicare Advantage Plans. New coverage would begin January 1st, 2026.

Companies are required to notify consumers of changes, however this information can be missed.

To make an appointment, please call the Honesdale center at 570-253-4262 or the Hawley center at 570-226-4209. There will be limited appointments for the Hamlin center, call Honesdale to schedule those. You can also call Medicare at 1-800-633-4227 or go online at medicare.gov.



pennsylvania

Medicare Education and Decision Insight





PILLOW MAKING CRAFT

On Tuesday, October 17th, members of the Hamlin Senior Center (Pictured above) learned how to make pillows. Grace Fell was the facilitator of the class and everyone enjoyed the craft and the fellowship as they worked! Great job everyone! We can't wait to see what crafts we do next!



Wayne County
WC
PL
 Public Library
 1406 Main Street
 Honesdale, PA 18431
 570-253-1220
www.waynelibraries.org
Connecting our community

December Program

Wednesday December 3rd 4:30-5:30

Gifts of Joy with Essential Oils— Join Helen Mele Robinson as she shares the joys of DIY gifts. Explore your favorite essential oils for the season. Create special gifts of room sprays and bath bombs for loved ones and share all the amazing benefits that essential oils have to offer!

TO REGISTER CONTACT:
Miles Keesler
Phone: 570-253-1220

Spotlight on US!

Congratulations to December's Spotlight on Us Recipient, Jen Warner! Jen came to Aging after 10 years of teaching and raising her kids, she is a Care Manager 2 and has been with us for 4 1/2 years. Here are some things her coworkers had to say about her!

"Jen is funny and always has a good story. She cares deeply about her job and always thinks of others!"

"Jen is a team player, she has a heart of gold and genuinely cares about her coworkers and the consumers!"

"Jen is so kind to her coworkers, helps new employees, and goes above and beyond with her consumers. She is truly a team player!"

"Jen has the patience of a saint when helping to train people and makes the job fun and easy!"



Tax-Aide Program Needs Volunteers to Help Taxpayers

Tax filing season may be months away, but the Pike/Wayne AARP Foundation Tax-Aide District is already seeking volunteers who want to serve their community. Tax-Aide provides free tax preparation services with a focus on serving older adults living with low to moderate income and helps them secure much-needed tax refunds. AARP membership is not required.

Volunteers are trained through a combination of self-study and classroom sessions. The classroom sessions will be held in January. The amount of training required depends on the position.

During tax filing season, February through April, volunteers assist taxpayers with tax preparation as well as greeting taxpayers and assisting them in organizing their tax documents. Volunteers can work anywhere from one to three days per week.

If you would like more information on this rewarding volunteer opportunity, please contact District Coordinator Debra Croston at debra.croston@gmail.com. If you are interested in volunteering, please complete the volunteer application at <https://www.aarpfoundation.org/taxaidevolunteer>



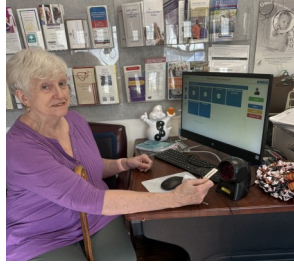
Wayne County Transportation System's Consumers:

- If the schools are closed for inclement weather which affects roads and travel, the Senior Centers, Home Delivered Meals and County Transportation System will not operate.
- Wayne Highlands School District: ALL Centers closed.
- Western Wayne School District only: Hamlin Center closed.
- Wallenpaupack School District only: Hawley Center & Adult Day program closed.
- If the schools are closed for other reasons (i.e. power outages), a determination will be made if the Centers, Home Delivered Meals and Transportation will operate. This will be announced on local radio (Bold Gold Media), TV (WBRE) and the County website (www.waynecountypa.gov) as early in the morning as possible, no later than 7:00 a.m.
- If the schools have a delay for inclement weather, the Senior Centers and Home Delivered Meals will work a normal schedule with no delay. Transportation will attempt to run as close to schedule as possible.
- PLEASE NOTE: The only time the offices will close is when the Courthouse closes. Transportation may cancel your ride if the local roads are not plowed or safe to transport – even if the department is open/operating during inclement weather or questionable road conditions. A determination will be made on a case by case basis. *Early closing of schools will be considered on a case by case basis.*

Reminder to Use the Co-Pilot Touchscreen System to Check in to Senior Centers

The Co-Pilot system is what helps our centers ensure that you are counted so that we can continue to receive funding for the best possible services and activities. If you are not familiar with the system, please don't hesitate to ask for help, and **remember to sign in for all your activities and meals!**

- Check In Electronically
- Order Meals
- Register for Activities
- Eliminate Sign-In Sheets

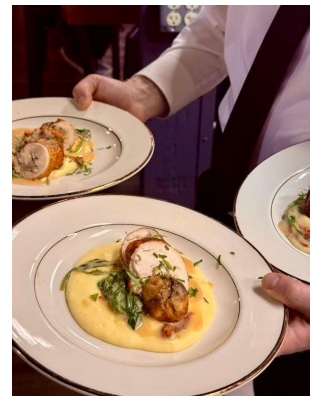


Pictured Left: Honesdale Senior Center Participant Cheryl Leonard demonstrating how easy Co-Pilot is to use!

First Annual *AgroLegacy* Dinner was a hit!

Chef Evan Munley of Munley Made Meals had the idea of supporting Wayne County's AgroLegacy brand by hosting a pop-up dinner. It wasn't just any dinner that he had in mind. His idea was to serve a high end, 7-course meal to a small, select group of diners. Each course featured items that were sourced from our 30 certified AgroLegacy farms. The event was held at the kitchen of 6th & River in Honesdale on November 8th. The courses were a work of art to look at as well as a delight to the taste buds. Each course expertly paired with wine from Three Hammers Winery. The menu consisted of pesto crusted lamb lollipops with honey roasted baby carrots, butternut squash soup with bacon and whipped ricotta, house-made gnocchi with sauteed rabbit, chicken roulade over goat cheese polenta, pan seared beef sirloin with dutchess potatoes and for those that still had room, apple pie with crème anglaise for dessert. The courses were spaced out with precision over a 2 and a half hour time period allowing time to fully enjoy each course. It was more than a meal, it was an experience that any foodie would fully appreciate.

What will Chef Evan dream up for the next pop-up dinner?





211 is a FREE and confidential service, connecting people to services in Wayne County.

**Get Connected / Get Help
Dial 211 or 1-855-567-5341
Website: pa211ne.org**

Editor: Christina Pane

Menu Coordinator: Lynn Potter, RD LDN

AgingNewsletter@waynecountypa.gov



**Find us on Facebook at Wayne
County Office of Human Services**



Wayne County Area Agency on Aging

323 10th Street

Honesdale, PA 18431

570-253-4262 / 570-209-5770 fax

Elder Abuse/Protective Services:

1-800-648-9620

Honesdale Center: Earl J. Simons Center, 323 10th Street, Honesdale, PA 18431, 570-253-5540. Located at end of 10th Street across from the Old Stone Jail.

Hamlin Center: Salem Township Building, 15 Township Bldg. Rd, Route 590, Hamlin, PA 18427 570-689-3766 /570-689-5002 fax, Route 191 South to Hamlin 4 corners, turn right onto 590 West, go 1/2 mile, turn right after Dunkin Donuts.

Hawley Center: Robert J. Drake Senior Community Center, 337 "A" Park Place, Bingham Park, Hawley, PA 18428, 570-226-4209 / 570-226-3422 fax. Route 6 to Hawley, past ball field across from mayor's office, just before bridge, left onto Park St.

Northern Wayne/Lakewood Satellite Center located at: Northern Wayne Fire Company, 1663 Crosstown Highway, Lakewood, PA 18439. Meetings are November-February, first Thursday only; March-October first and third Thursday. **For reservations**, please call Ginny at 570-253-5540.

Transportation: 323 10th Street, Honesdale, PA 18431; 8:00 AM-4:00 PM www.waynecountypa.gov. Go to "Human Services" click on "Transportation" Call 570-253-4280; out of 253 exchange 1-800-662-0780.

Wayne County Veterans Affairs Representative: 929 Court Street (Rear Entrance of Building), Honesdale, PA 18431; For an appointment call 570-253-5970, ext. 3114 or email: va@waynecountypa.gov.

Wayne County Adult Day Program: Robert J. Drake Senior Community Center 337 "B" Park Place, Bingham Park, Hawley, PA 18428 ***We are accepting applications for new participants. Please call: 570-390-7388; fax 570-390-4564.***