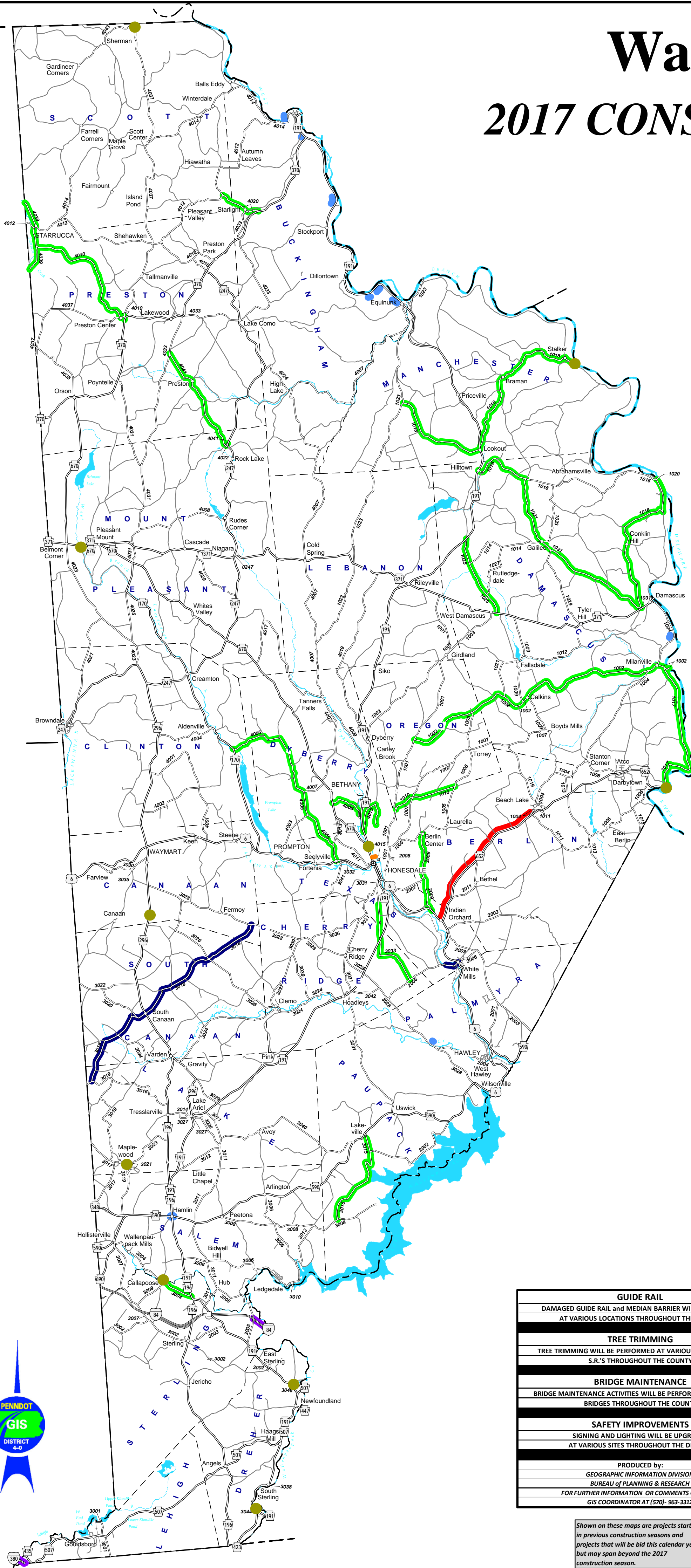


Wayne County

2017 CONSTRUCTION SEASON



DEPARTMENT FORCE SURFACE IMPROVEMENTS		
S.R.	DESCRIPTION	MILES
1002	CALKINS ROAD (BASE & EDGE REPAIR)	10.63
1010	SMITH HILL ROAD (PAVE)	2.29
1016	CALLICOON ROAD	2.13
1016	CONKLIN HILL ROAD	5.67
1017	RIVER ROAD	5.39
1018	ADAMS ROAD	9.48
1025	RUTLEDGEDALE ROAD (BASE & EDGE REPAIR)	2.88
1031	GALLILEE ROAD (PAVE)	4.29
2009	BROOK ROAD	2.83
3004	POND ROAD	1.14
3015	FINN SWAMP ROAD	3.99
3033	SPINNER ROAD	3.24
4005	BEECH GROVE ROAD (BASE & EDGE REPAIR)	6.79
4006	MILLER DRIVE	1.42
4015	WENIGER HILL ROAD	1.80
4010	KINGHILL ROAD	1.88
4020	STARLIGHT LAKE ROAD	1.50
4039	STARRUCCA CREEK ROAD	2.45
4041	ROCK LAKE ROAD	4.03
TOTAL		73.83

SURFACE IMPROVEMENTS			
S.R.	ECMS	DESCRIPTION	MILES
2006	105174	WHITE MILLS ROAD	0.67
3018	107657	CORTEZ ROAD	8.38
TOTAL			9.05

BRIDGES		
S.R.	ECMS	DESCRIPTION
0191	85787	OVER MANNY RUN, DREHER TWP.
0191	89022	OVER DYBERRY CREEK, HONESDALE BORO
0296	9969	OVER BRANCH MIDDLE CREEK, CANAAN TWP. (P-3)
0371	68891	OVER LACKAWAXEN RIVER, MT. PLEASANT TWP.
0652	83052	OVER DELAWARE RIVER, NARROWSBURG BRIDGE
1018	96963	OVER DELAWARE RIVER, KELLAM BRIDGE
3004	89021	OVER WALLENPAUPACK CREEK, STERLING TWP.
3019	9882	OVER JONES CREEK, LAKE TWP.
3046	9974	OVER SPRING RUN, DREHER TWP.
4037	9978	OVER OQUAGA CREEK, SCOTT TWP. (P-3)

ROADWAY PROJECTS		
S.R.	ECMS	DESCRIPTION
0191	96818	HANCOCK HWY. BUCKINGHAM TWP. (SLIDE REPAIR)
0191	96908	HANCOCK HWY. BUCKINGHAM TWP. (SLIDE REPAIR)
0370	96904	CROSTOWN HWY. (SLIDE REPAIR)
0590	57868	HAMLIN CORNERS (BETTERMENT)
1004	96905	MILANVILLE ROAD (SLIDE REPAIR)
3028	96821	OWEGO TURNPIKE, PALMYRA TWP. (SLIDE REPAIR)
4014	96881	MAPLE GROVE ROAD (SLIDE REPAIR)

INTERSTATE ROADWAY PROJECTS		
S.R.	ECMS	DESCRIPTION
0084	76861	EB/WB RECONSTRUCTION
0380	87791	CPR with DIAMOND GRINDING

ENHANCEMENTS		
LOCAL	ECMS	DESCRIPTION
	105177	WAYNE COUNTY PEDESTRIAN BRIDGE, HONESDALE

SAFETY PROJECTS		
S.R.	ECMS	DESCRIPTION
0652	102326	SHOULDER PAVING, EDGE LINE RUMBLE STRIPS
0652	106632	SHOULDER PAVING, EDGE LINE RUMBLE STRIPS

GUIDE RAIL
DAMAGED GUIDE RAIL AND MEDIAN BARRIER WILL BE REPAIRED AT VARIOUS LOCATIONS THROUGHOUT THE COUNTY

TREE TRIMMING
TREE TRIMMING WILL BE PERFORMED AT VARIOUS LOCATIONS ON S.R.'S THROUGHOUT THE COUNTY

BRIDGE MAINTENANCE
BRIDGE MAINTENANCE ACTIVITIES WILL BE PERFORMED ON VARIOUS BRIDGES THROUGHOUT THE COUNTY

SAFETY IMPROVEMENTS
SIGNING AND LIGHTING WILL BE UPGRADED AT VARIOUS SITES THROUGHOUT THE DISTRICT

PRODUCED BY:
GEOGRAPHIC INFORMATION DIVISION
BUREAU OF PLANNING & RESEARCH
FOR FURTHER INFORMATION OR COMMENTS CONTACT:
GIS COORDINATOR AT (570)-963-3312

Shown on these maps are projects started in previous construction seasons and projects that will be bid this calendar year but may span beyond the 2017 construction season.

Note: Department Force Surface Improvements are Oil & Chip unless otherwise noted

